



TOLUCA

1 al 28 de febrero de 2025
VIOLENCIA DE GÉNERO
REPORTE EJECUTIVO



SEGURIDAD

SECRETARÍA DE SEGURIDAD

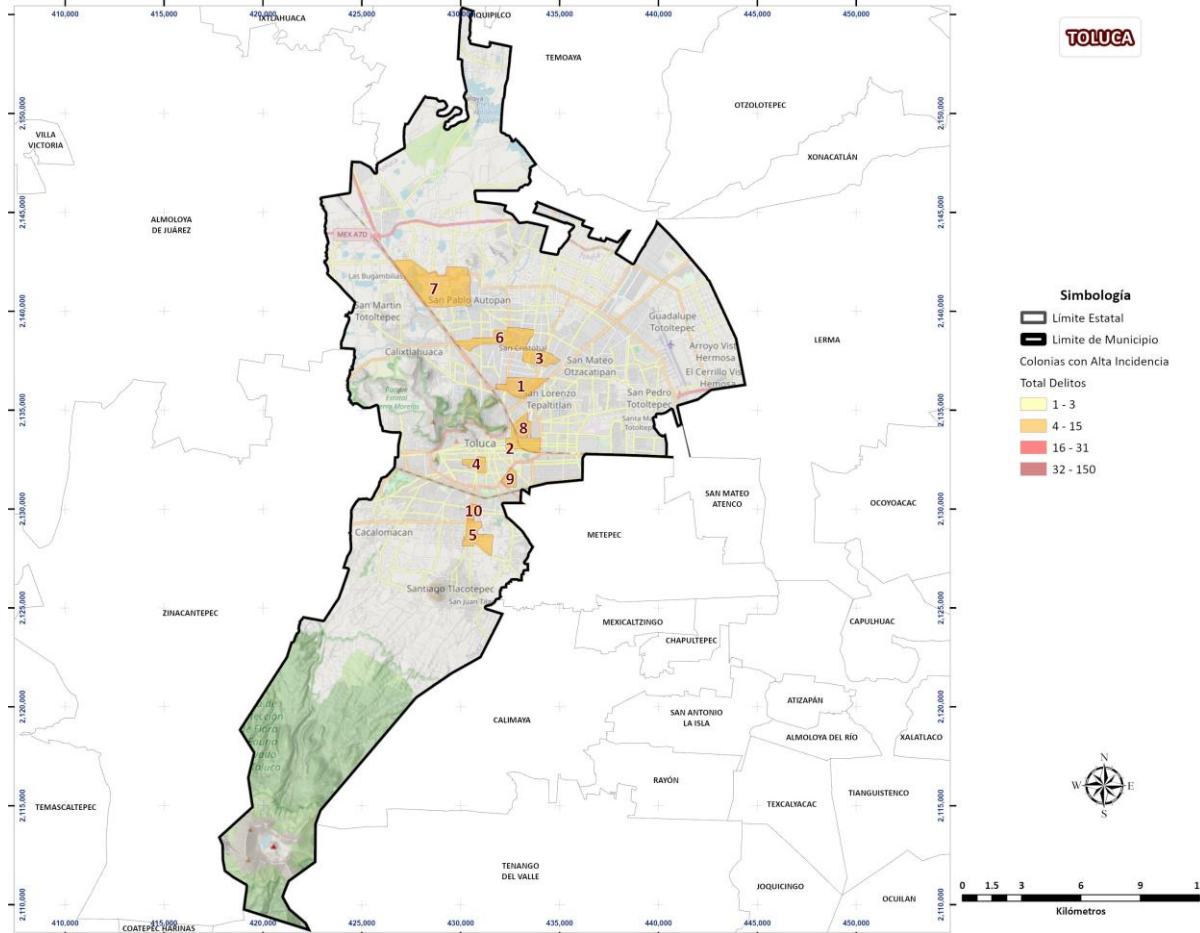


MARZO 2025

Fuente: Fiscalía General de Justicia - Delitos Vinculados a Violencia de Género (FGJ-VG), Fiscalía General de Justicia - Delitos de Alto Impacto (FGJ-DAI), Sistema de Emergencia 9-1-1 (SE911) y Sistema de Denuncia Anónima 089 (SDA089)



- Cabe destacar, que derivado de este análisis para el mes de febrero en el municipio de Toluca, se identificaron diez colonias de atención prioritaria, las cuales concentran el 14% de la incidencia del municipio.



Colonias repetidas en el periodo

No.	Colonia	Inc.	%	% Acum.
1	EX HACIENDA LA MAGDALENA (BARRIO SAN JUAN DE LA CRUZ)	13	2.10	2.10
2	REFORMA Y FERROCARRILES NACIONALES (SAN JUAN BAUTISTA)	9	1.45	3.55
3	LA TRINIDAD I	9	1.45	5.00
4	FRANCISCO MURGUÍA (EL RANCHITO)	8	1.29	6.29
5	SAN ISIDRO LABRADOR	8	1.29	7.58
6	SAN GABRIEL	8	1.29	8.87
7	DE JESÚS 1RA SECCIÓN	8	1.29	10.16
8	INDEPENDENCIA 1	7	1.13	11.29
9	VALLE VERDE Y TERMINAL	7	1.13	12.42
10	MODERNA DE LA CRUZ II	7	1.13	13.55

DELITOS	INCIDENCIA	% DE INCIDENCIA
VIOLENCIA FAMILIAR	510	82.26
VIOLENCIA DE PAREJA	50	8.06
LESIONES	37	5.97
HOSTIGAMIENTO Y ACOSO SEXUAL	8	1.29
VIOLENCIA CONTRA LA MUJER	5	0.81
ABUSO SEXUAL	4	0.65
HOMICIDIO	4	0.65
VIOLACIÓN	2	0.32
TOTAL GENERAL	620	100.0%

Composición de los datos por fuente:

FGJ-VG:	FGJ-DAI:	SE911:	SDA089:
0.00%	0.00%	99.19%	0.81%



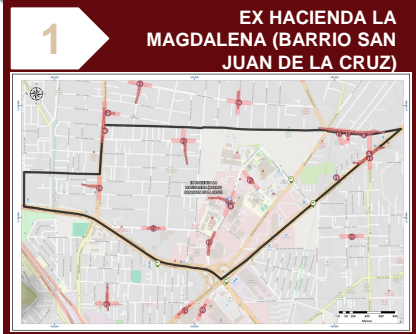
TOLUCA

COLONIAS DE ATENCIÓN

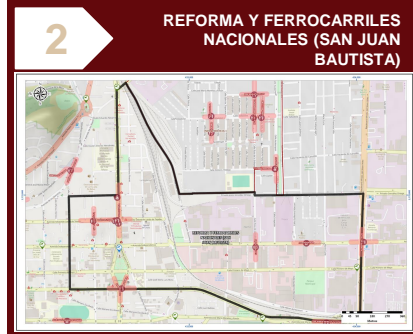
14%

SEGURIDAD

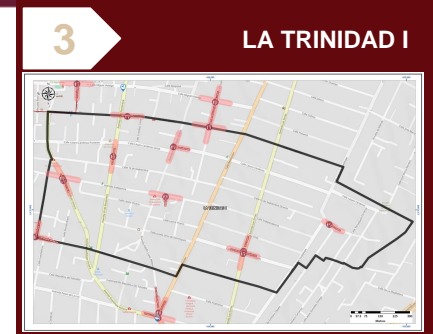
SECRETARÍA DE SEGURIDAD



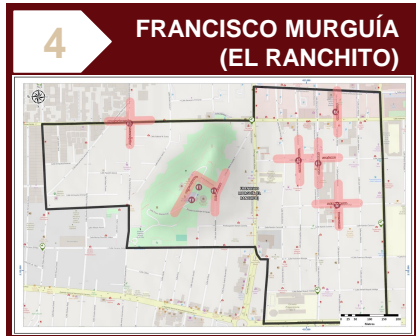
	VIOLENCIA FAMILIAR	15:00 - 17:59	69%
	VIOLENCIA DE PAREJA	21:00 - 23:59	23%
	HOSTIGAMIENTO Y ACOSO SEXUAL	15:00 - 17:59	8%



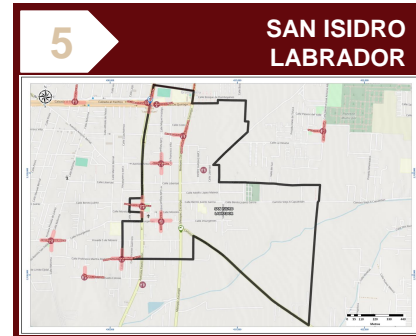
	VIOLENCIA FAMILIAR	21:00 - 23:59	78%
	LESIONES	15:00 - 17:59	11%
	VIOLENCIA DE PAREJA	06:00 - 08:59	11%



	VIOLENCIA FAMILIAR	18:00 - 20:59	100%
--	--------------------	---------------	------



	VIOLENCIA FAMILIAR	12:00 - 14:59	63%
	VIOLENCIA DE PAREJA	21:00 - 23:59 15:00 - 17:59	25%
	HOSTIGAMIENTO Y ACOSO SEXUAL	18:00 - 20:59	13%



	VIOLENCIA FAMILIAR	15:00 - 17:59	75%
	ABUSO SEXUAL	06:00 - 08:59	13%
	VIOLENCIA DE PAREJA	12:00 - 14:59	13%



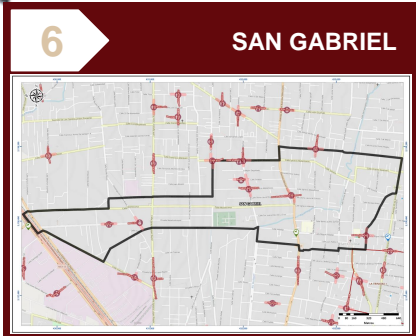
TOLUCA

COLONIAS DE ATENCIÓN

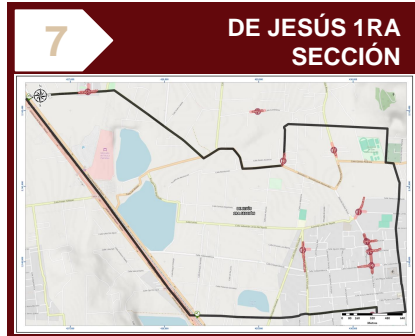
14%

SEGURIDAD

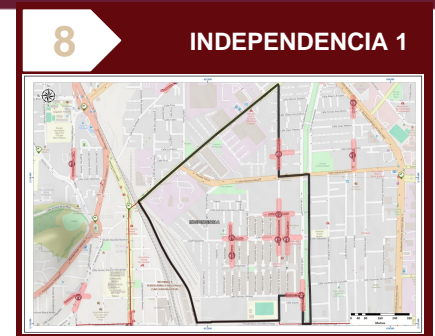
SECRETARÍA DE SEGURIDAD



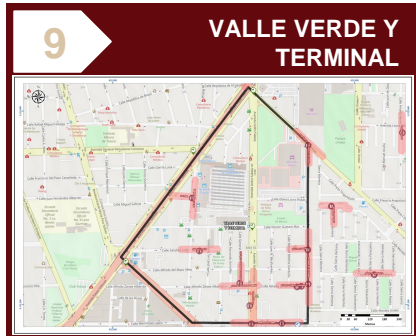
	VIOLENCIA FAMILIAR	15:00 - 17:59	75%
	LESIONES	09:00 - 11:59 21:00 - 23:59	25%



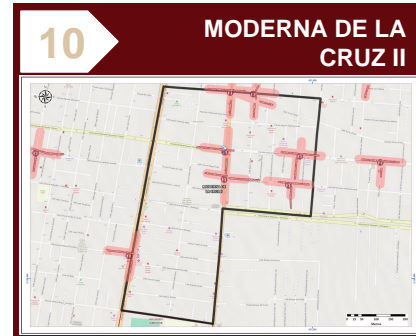
	VIOLENCIA FAMILIAR	18:00 - 20:59	100%
--	---------------------------	---------------	------



	VIOLENCIA FAMILIAR	18:00 - 20:59	86%
	LESIONES	12:00 - 14:59	14%



	VIOLENCIA FAMILIAR	18:00 - 20:59	71%
	VIOLENCIA DE PAREJA	18:00 - 20:59	29%



	VIOLENCIA FAMILIAR	00:00 - 02:59	100%
--	---------------------------	---------------	------



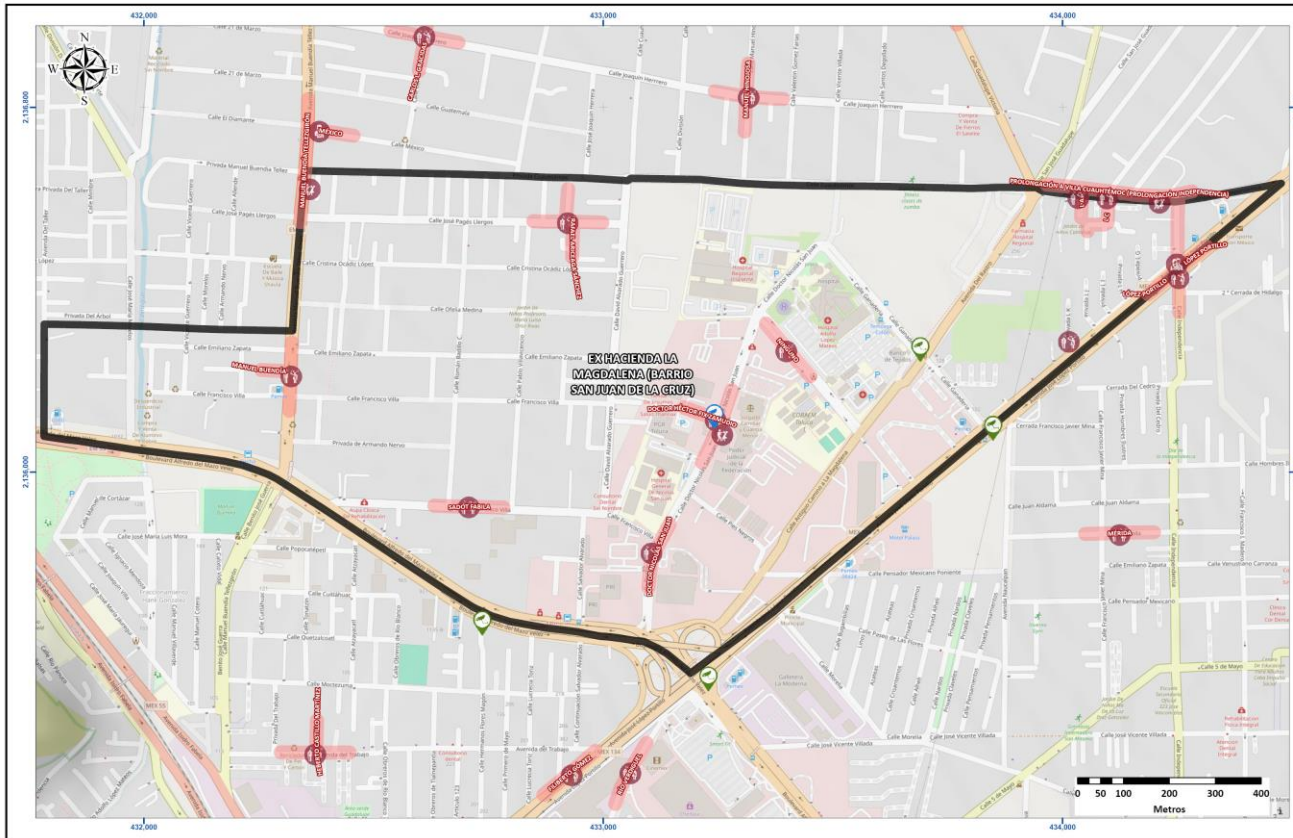
1

EX HACIENDA LA MAGDALENA (BARRIO SAN JUAN DE LA CRUZ)

CORREDORES PRIORITARIOS

SEGURIDAD

SECRETARÍA DE SEGURIDAD



VIOLENCIA FAMILIAR

CALLE DOCTOR NICOLÁS SAN JUAN



Horario de atención: 09:00 - 11:59 MARTES

69%

VIOLENCIA DE PAREJA

PROLONGACIÓN A VILLA CUAUHTÉMOC (PROLONGACIÓN INDEPENDENCIA)



Horario de atención: 21:00 - 23:59 SÁBADO

23%

HOSTIGAMIENTO Y ACOSO SEXUAL

AVENIDA LÓPEZ PORTILLO



Horario de atención: 15:00 - 17:59 VIERNES

8%

Horario	D	L	Ma	Mi	J	V	S	Total
00:00 - 02:59	7.7%	0.0%	0.0%	0.0%	0.0%	0.0%	0.0%	7.7%
03:00 - 05:59	0.0%	0.0%	0.0%	0.0%	0.0%	0.0%	0.0%	0.0%
06:00 - 08:59	0.0%	0.0%	0.0%	0.0%	0.0%	0.0%	0.0%	0.0%
09:00 - 11:59	0.0%	0.0%	15.4%	0.0%	0.0%	0.0%	0.0%	15.4%
12:00 - 14:59	0.0%	7.7%	0.0%	0.0%	0.0%	0.0%	0.0%	7.7%
15:00 - 17:59	0.0%	0.0%	7.7%	0.0%	7.7%	15.4%	0.0%	30.8%
18:00 - 20:59	0.0%	7.7%	0.0%	0.0%	0.0%	0.0%	7.7%	15.4%
21:00 - 23:59	7.7%	0.0%	0.0%	0.0%	0.0%	0.0%	15.4%	23.1%
Total	15.4%	15.4%	23.1%	0.0%	7.7%	15.4%	23.1%	100.0%



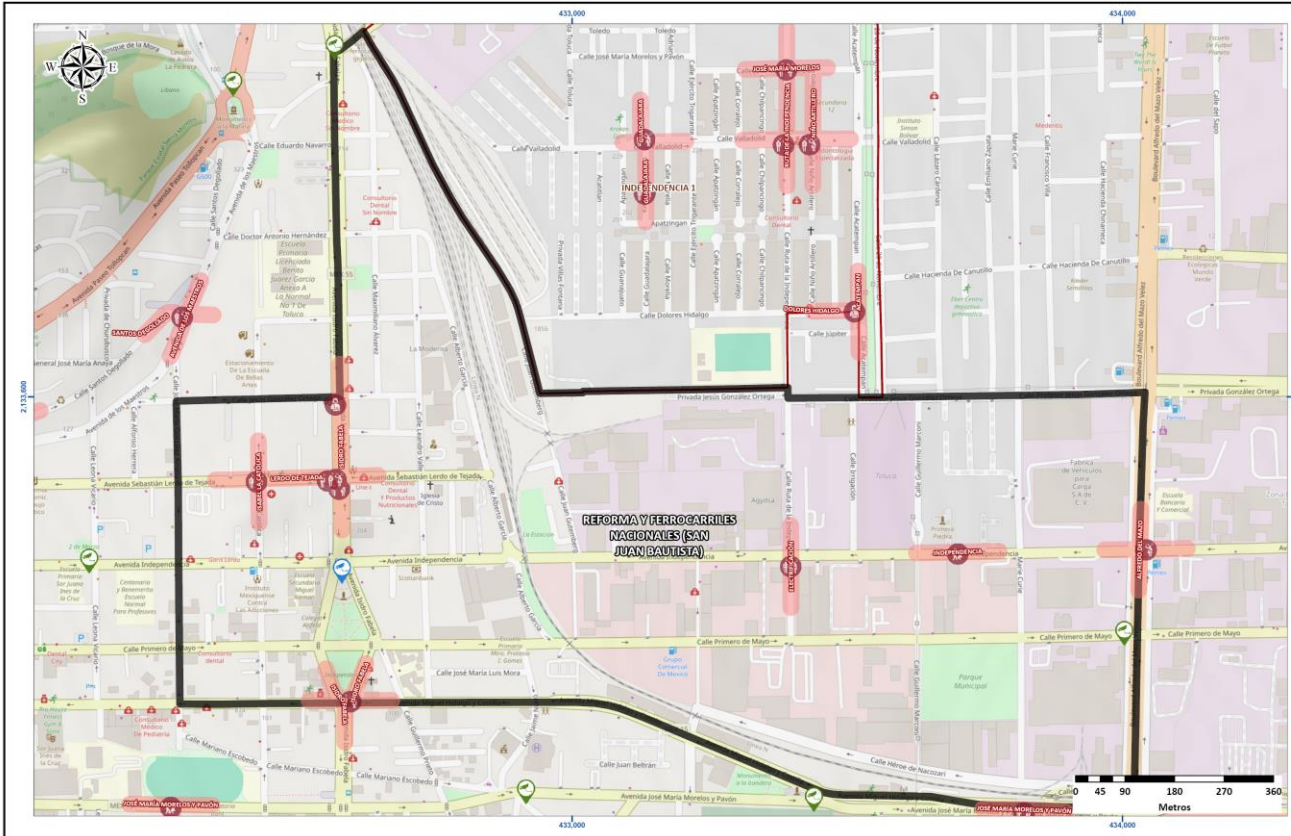
2

REFORMA Y FERROCARRILES NACIONALES (SAN JUAN BAUTISTA)

CORREDORES PRIORITARIOS

SEGURIDAD

SECRETARÍA DE SEGURIDAD



VIOLENCIA FAMILIAR

BOULEVARD ISIDRO FABELA



Horario de atención: **21:00 - 23:59 DOMINGO**

78%

LESIONES

BOULEVARD ISIDRO FABELA



Horario de atención: **15:00 - 17:59 JUEVES**

11%

VIOLENCIA DE PAREJA

AVENIDA INDEPENDENCIA



Horario de atención: **06:00 - 08:59 MARTES**

11%

Horario	D	L	Ma	Mi	J	V	S	Total
00:00 - 02:59	0.0%	0.0%	0.0%	0.0%	0.0%	0.0%	0.0%	0.0%
03:00 - 05:59	0.0%	0.0%	0.0%	0.0%	0.0%	0.0%	0.0%	0.0%
06:00 - 08:59	0.0%	0.0%	11.1%	0.0%	0.0%	0.0%	0.0%	11.1%
09:00 - 11:59	0.0%	0.0%	0.0%	0.0%	0.0%	11.1%	0.0%	11.1%
12:00 - 14:59	0.0%	11.1%	0.0%	0.0%	0.0%	0.0%	0.0%	11.1%
15:00 - 17:59	0.0%	0.0%	0.0%	0.0%	11.1%	0.0%	0.0%	11.1%
18:00 - 20:59	0.0%	11.1%	0.0%	0.0%	0.0%	0.0%	0.0%	11.1%
21:00 - 23:59	11.1%	0.0%	0.0%	0.0%	0.0%	33.3%	0.0%	44.4%
Total	11.1%	22.2%	11.1%	0.0%	11.1%	44.4%	0.0%	100.0%

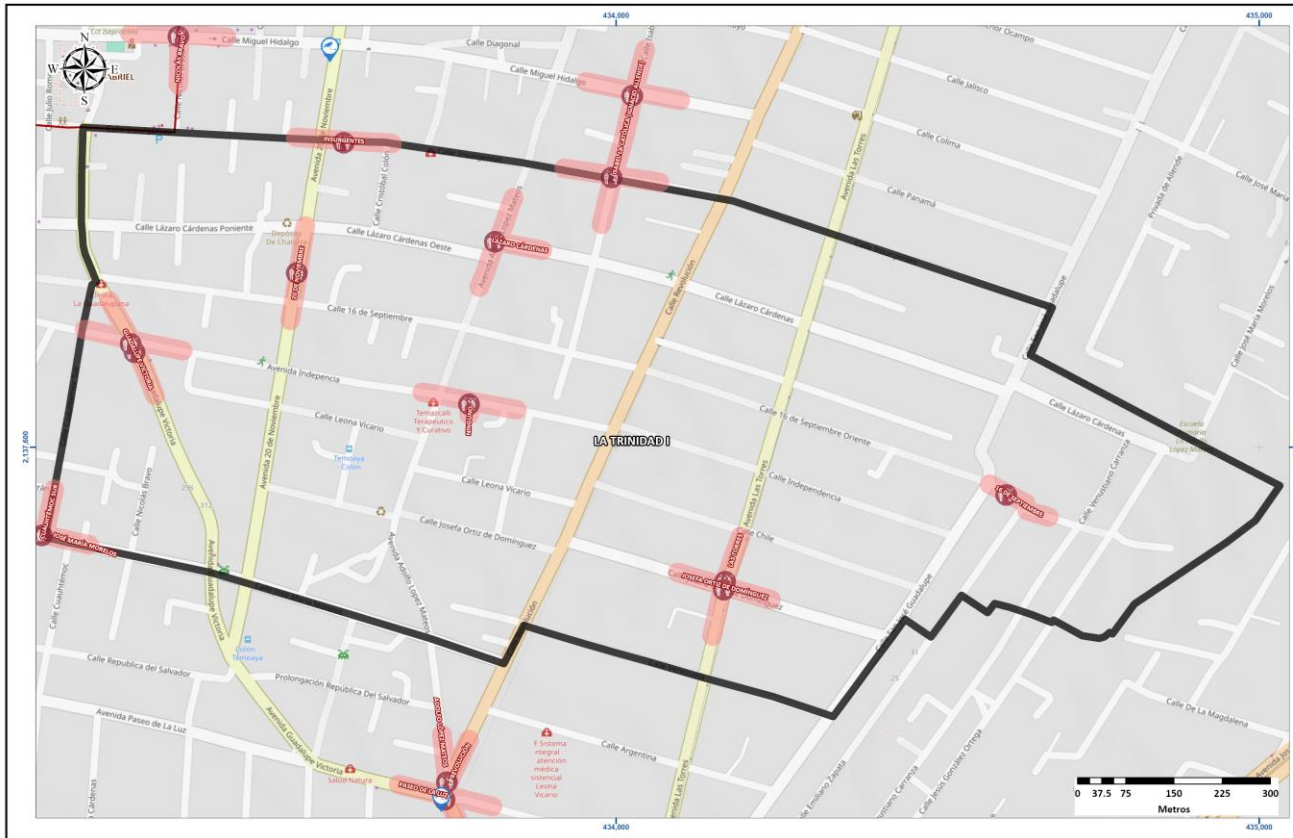


3

LA TRINIDAD I CORREDORES PRIORITARIOS

SEGURIDAD

SECRETARÍA DE SEGURIDAD



VIOLENCIA FAMILIAR

CALLE JOSEFA ORTIZ DE DOMÍNGUEZ



Horario de atención

18:00 - 20:59
DOMINGO

100%

Horario	D	L	Ma	Mi	J	V	S	Total
00:00 - 02:59	0.0%	0.0%	0.0%	0.0%	0.0%	0.0%	0.0%	0.0%
03:00 - 05:59	0.0%	0.0%	0.0%	0.0%	0.0%	0.0%	0.0%	0.0%
06:00 - 08:59	0.0%	0.0%	0.0%	0.0%	11.1%	0.0%	11.1%	22.2%
09:00 - 11:59	0.0%	0.0%	0.0%	0.0%	0.0%	0.0%	0.0%	0.0%
12:00 - 14:59	0.0%	0.0%	0.0%	0.0%	0.0%	0.0%	0.0%	0.0%
15:00 - 17:59	0.0%	0.0%	11.1%	0.0%	0.0%	0.0%	0.0%	11.1%
18:00 - 20:59	22.2%	0.0%	11.1%	0.0%	0.0%	0.0%	0.0%	33.3%
21:00 - 23:59	0.0%	0.0%	0.0%	11.1%	0.0%	22.2%	0.0%	33.3%
Total	22.2%	0.0%	22.2%	11.1%	11.1%	22.2%	11.1%	100.0%



4

FRANCISCO MURGUÍA (EL RANCHITO)

CORREDORES PRIORITARIOS

SEGURIDAD

SECRETARÍA DE SEGURIDAD



VIOLENCIA FAMILIAR

CALLE PASEO MATLAZINCAS



Horario de atención
21:00 - 23:59
SÁBADO

63%

VIOLENCIA DE PAREJA

CALLE IGNACIO ALLENDE



Horario de atención
21:00 - 23:59
SÁBADO

25%

HOSTIGAMIENTO Y ACOSO SEXUAL

CALLE HERMENEGILDO GALEANA



Horario de atención
18:00 - 20:59
LUNES

13%

Horario	D	L	Ma	Mi	J	V	S	Total
00:00 - 02:59	0.0%	0.0%	0.0%	0.0%	0.0%	0.0%	12.5%	12.5%
03:00 - 05:59	0.0%	0.0%	0.0%	0.0%	0.0%	0.0%	0.0%	0.0%
06:00 - 08:59	0.0%	0.0%	0.0%	0.0%	0.0%	0.0%	0.0%	0.0%
09:00 - 11:59	0.0%	0.0%	0.0%	0.0%	0.0%	0.0%	0.0%	0.0%
12:00 - 14:59	25.0%	0.0%	12.5%	0.0%	0.0%	0.0%	0.0%	37.5%
15:00 - 17:59	0.0%	12.5%	0.0%	0.0%	0.0%	0.0%	0.0%	12.5%
18:00 - 20:59	0.0%	12.5%	0.0%	0.0%	0.0%	0.0%	0.0%	12.5%
21:00 - 23:59	0.0%	0.0%	0.0%	0.0%	0.0%	0.0%	25.0%	25.0%
Total	25.0%	25.0%	12.5%	0.0%	0.0%	0.0%	37.5%	100.0%

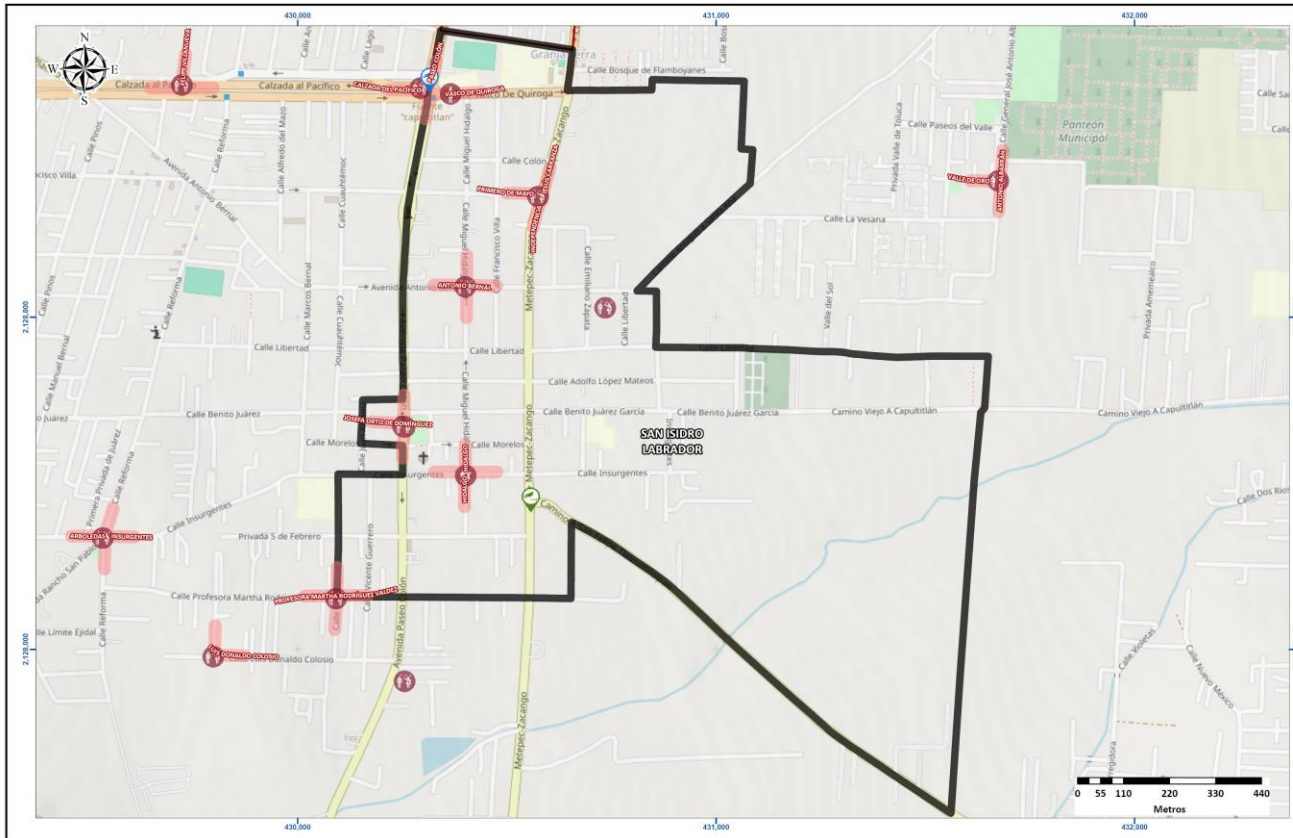


5

SAN ISIDRO LABRADOR CORREDORES PRIORITARIOS

SEGURIDAD

SECRETARÍA DE SEGURIDAD



VIOLENCIA FAMILIAR

CALLE JOSEFA ORTIZ DE DOMÍNGUEZ



Horario de atención
**15:00 - 17:59
SÁBADO**

75%

ABUSO SEXUAL

CALLE VASCO DE QUIROGA



Horario de atención
**06:00 - 08:59
VIERNES**

13%

VIOLENCIA DE PAREJA

CALLE HIDALGO



Horario de atención
**12:00 - 14:59
DOMINGO**

13%

Horario	D	L	Ma	Mi	J	V	S	Total
00:00 - 02:59	12.5%	0.0%	0.0%	0.0%	0.0%	0.0%	0.0%	12.5%
03:00 - 05:59	0.0%	0.0%	0.0%	0.0%	0.0%	0.0%	0.0%	0.0%
06:00 - 08:59	0.0%	0.0%	0.0%	0.0%	0.0%	12.5%	0.0%	12.5%
09:00 - 11:59	0.0%	0.0%	0.0%	0.0%	0.0%	0.0%	0.0%	0.0%
12:00 - 14:59	12.5%	0.0%	0.0%	12.5%	0.0%	0.0%	0.0%	25.0%
15:00 - 17:59	0.0%	0.0%	0.0%	0.0%	0.0%	0.0%	25.0%	25.0%
18:00 - 20:59	0.0%	0.0%	0.0%	0.0%	12.5%	0.0%	0.0%	12.5%
21:00 - 23:59	0.0%	0.0%	0.0%	0.0%	0.0%	0.0%	12.5%	12.5%
Total	25.0%	0.0%	0.0%	12.5%	12.5%	12.5%	37.5%	100.0%

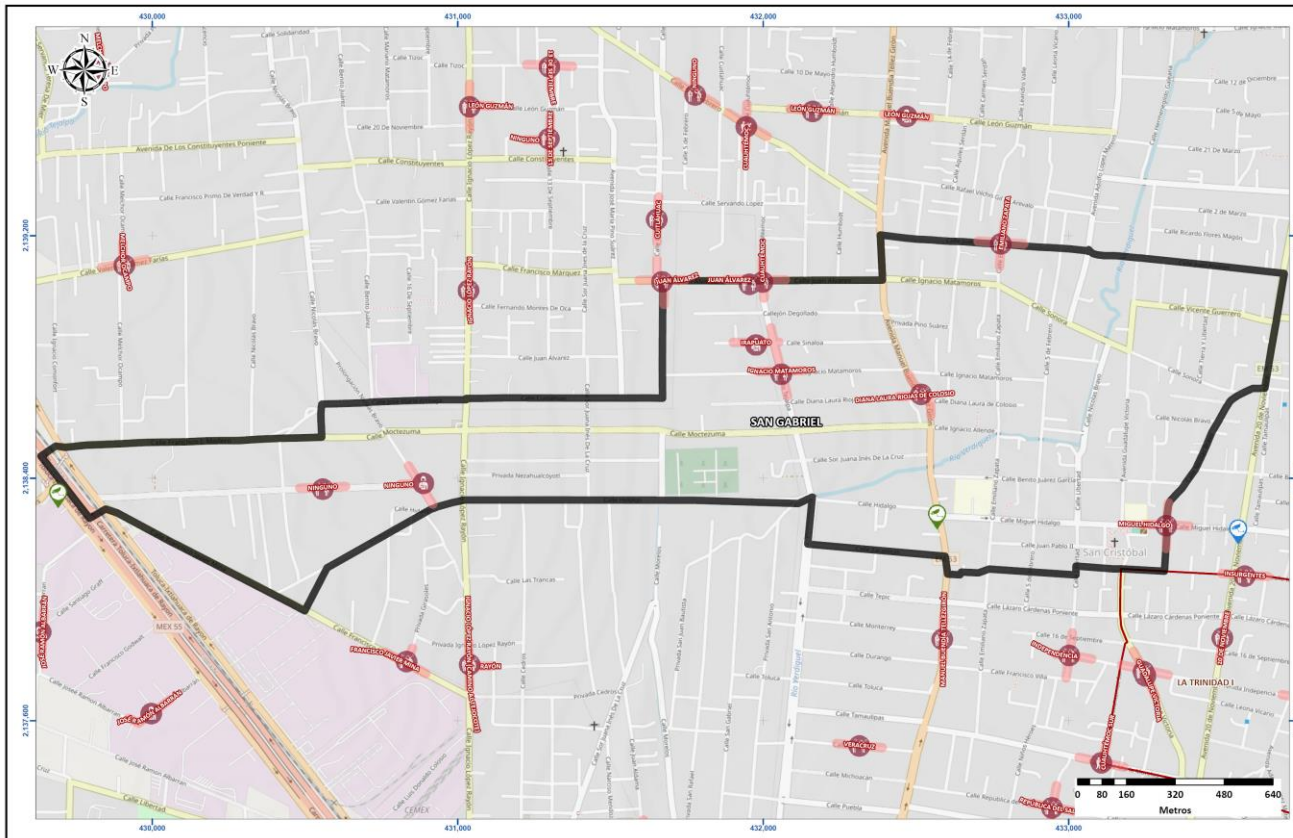


6

SAN GABRIEL CORREDORES PRIORITARIOS

SEGURIDAD

SECRETARÍA DE SEGURIDAD



VIOLENCIA FAMILIAR

AVENIDA MANUEL BUENDÍA
TELLEZGIRÓN



Horario de atención
**09:00 - 11:59
SÁBADO**

75%

LESIONES

CALLE IRAPUATO



Horario de atención
**09:00 - 11:59
JUEVES**

25%

Horario	D	L	Ma	Mi	J	V	S	Total
00:00 - 02:59	0.0%	0.0%	0.0%	0.0%	0.0%	0.0%	0.0%	0.0%
03:00 - 05:59	0.0%	0.0%	0.0%	0.0%	0.0%	0.0%	0.0%	0.0%
06:00 - 08:59	0.0%	0.0%	0.0%	0.0%	0.0%	0.0%	0.0%	0.0%
09:00 - 11:59	0.0%	0.0%	0.0%	0.0%	12.5%	0.0%	12.5%	25.0%
12:00 - 14:59	0.0%	0.0%	0.0%	0.0%	0.0%	0.0%	0.0%	0.0%
15:00 - 17:59	0.0%	0.0%	25.0%	0.0%	0.0%	0.0%	0.0%	25.0%
18:00 - 20:59	0.0%	0.0%	0.0%	12.5%	0.0%	0.0%	0.0%	12.5%
21:00 - 23:59	0.0%	25.0%	0.0%	12.5%	0.0%	0.0%	0.0%	37.5%
Total	0.0%	25.0%	25.0%	25.0%	12.5%	0.0%	12.5%	100.0%



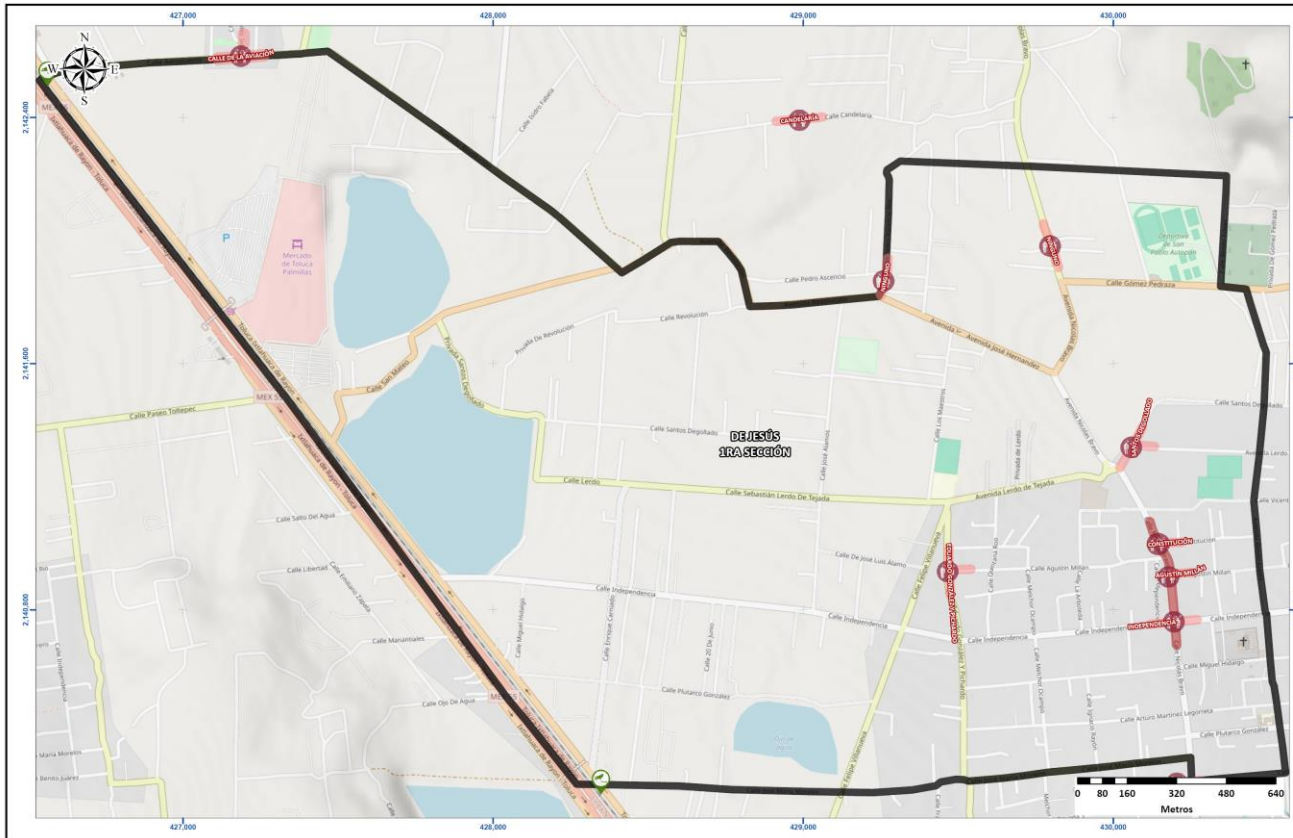
7

DE JESÚS 1RA SECCIÓN

CORREDORES PRIORITARIOS

SEGURIDAD

SECRETARÍA DE SEGURIDAD



VIOLENCIA FAMILIAR

CALLE NICOLÁS BRAVO



Horario de atención

18:00 - 20:59
MIÉRCOLES

100%

Horario	D	L	Ma	Mi	J	V	S	Total
00:00 - 02:59	0.0%	0.0%	0.0%	0.0%	0.0%	0.0%	0.0%	0.0%
03:00 - 05:59	12.5%	0.0%	0.0%	0.0%	0.0%	0.0%	0.0%	12.5%
06:00 - 08:59	0.0%	0.0%	0.0%	0.0%	0.0%	0.0%	0.0%	0.0%
09:00 - 11:59	0.0%	0.0%	0.0%	0.0%	0.0%	12.5%	0.0%	12.5%
12:00 - 14:59	0.0%	0.0%	0.0%	0.0%	0.0%	0.0%	12.5%	12.5%
15:00 - 17:59	0.0%	0.0%	0.0%	0.0%	0.0%	12.5%	0.0%	12.5%
18:00 - 20:59	0.0%	12.5%	0.0%	12.5%	0.0%	0.0%	0.0%	25.0%
21:00 - 23:59	0.0%	0.0%	0.0%	0.0%	0.0%	12.5%	12.5%	25.0%
Total	12.5%	12.5%	0.0%	12.5%	0.0%	37.5%	25.0%	100.0%



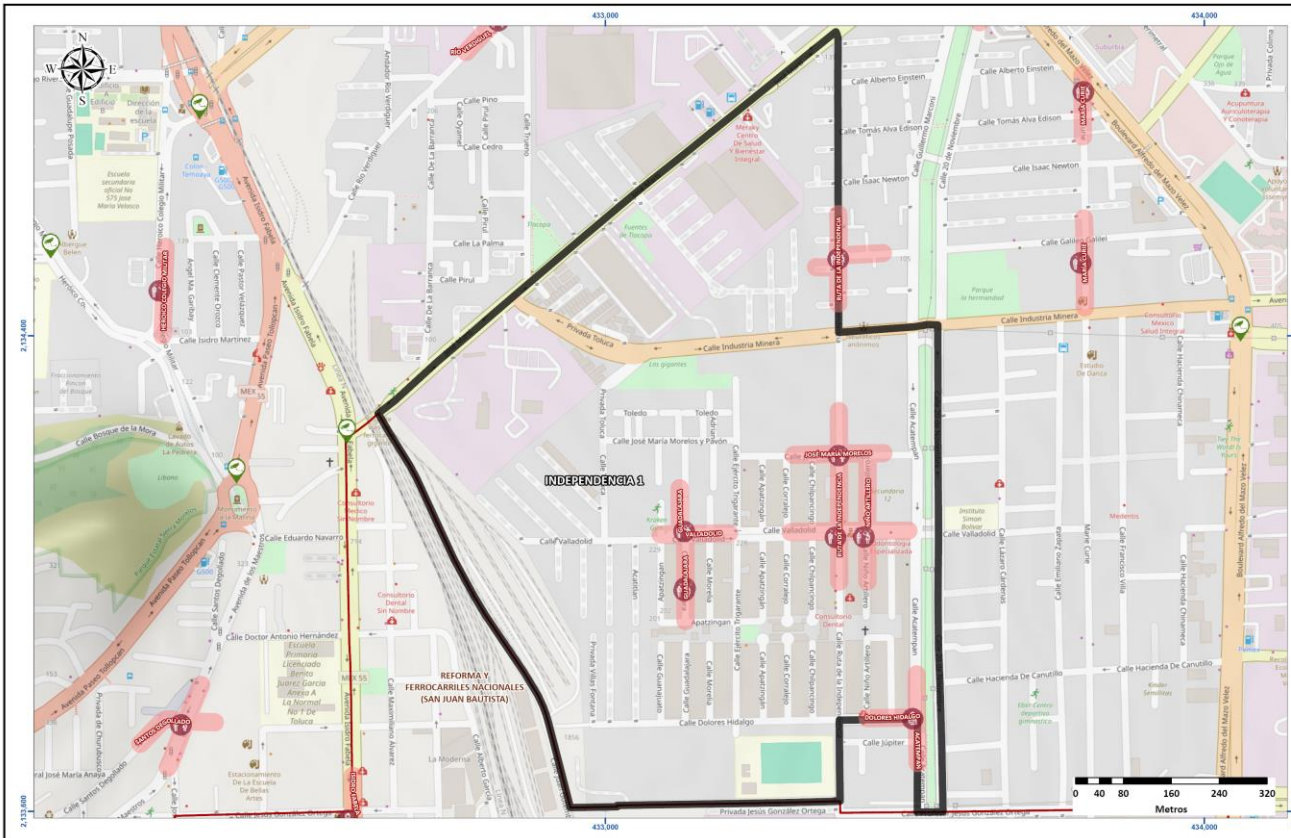
8

INDEPENDENCIA 1

CORREDORES PRIORITARIOS

SEGURIDAD

SECRETARÍA DE SEGURIDAD



VIOLENCIA FAMILIAR

CALLE VALLADOLID



Horario de atención: **18:00 - 20:59 LUNES**

86%

LESIONES

CALLE ACATEMPAN



Horario de atención: **12:00 - 14:59 JUEVES**

14%

Horario	D	L	Ma	Mi	J	V	S	Total
00:00 - 02:59	0.0%	0.0%	0.0%	0.0%	0.0%	0.0%	0.0%	0.0%
03:00 - 05:59	0.0%	0.0%	0.0%	0.0%	0.0%	0.0%	0.0%	0.0%
06:00 - 08:59	0.0%	0.0%	0.0%	0.0%	0.0%	0.0%	0.0%	0.0%
09:00 - 11:59	0.0%	0.0%	14.3%	0.0%	0.0%	0.0%	0.0%	14.3%
12:00 - 14:59	0.0%	0.0%	0.0%	0.0%	28.6%	0.0%	0.0%	28.6%
15:00 - 17:59	0.0%	0.0%	0.0%	0.0%	0.0%	0.0%	0.0%	0.0%
18:00 - 20:59	0.0%	14.3%	0.0%	0.0%	28.6%	0.0%	0.0%	42.9%
21:00 - 23:59	0.0%	0.0%	0.0%	14.3%	0.0%	0.0%	0.0%	14.3%
Total	0.0%	14.3%	14.3%	14.3%	57.1%	0.0%	0.0%	100.0%

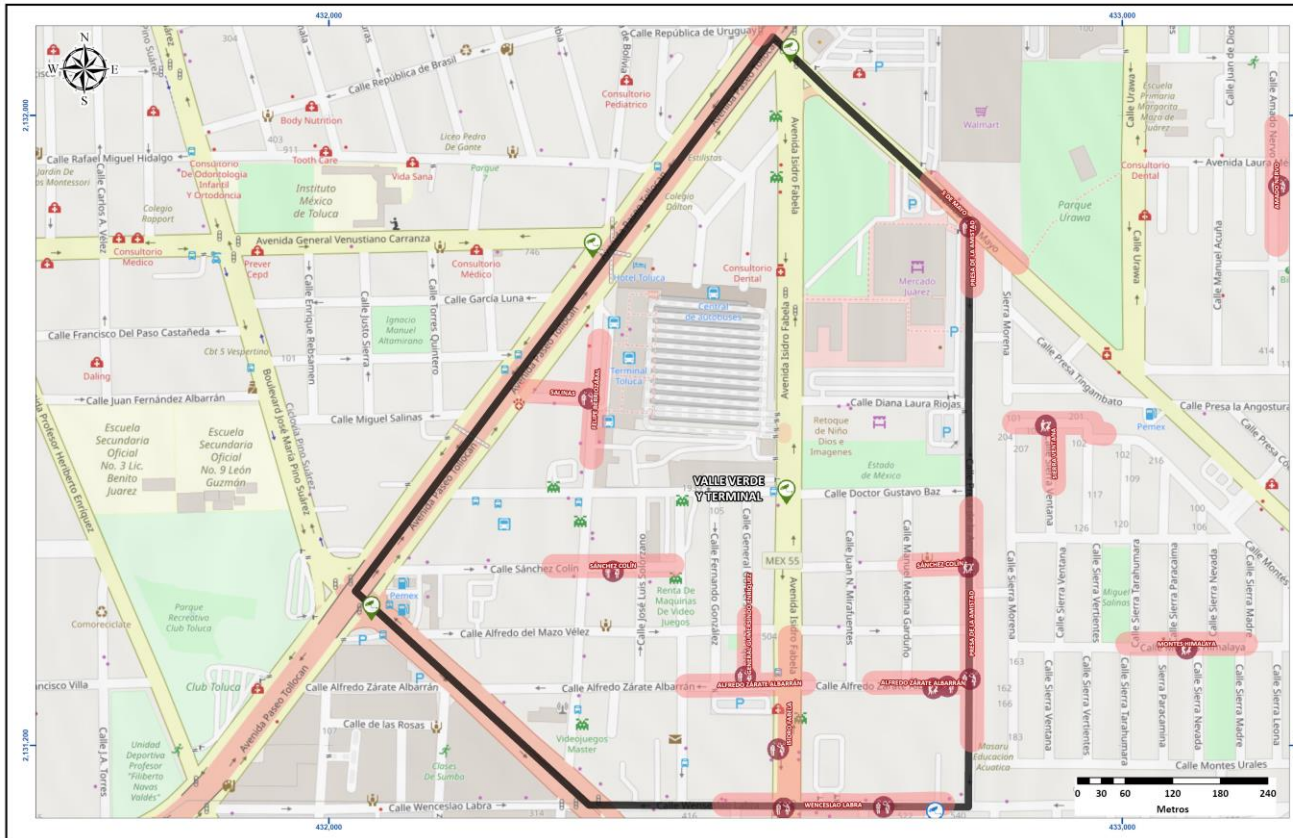


9

VALLE VERDE Y TERMINAL CORREDORES PRIORITARIOS

SEGURIDAD

SECRETARÍA DE SEGURIDAD



VIOLENCIA FAMILIAR

CALLE ALFREDO ZÁRATE ALBARRÁN



Horario de atención

18:00 - 20:59
VIERNES

71%

VIOLENCIA DE PAREJA

CALLE ALFREDO ZÁRATE ALBARRÁN



Horario de atención

18:00 - 20:59
VIERNES

29%

Horario	D	L	Ma	Mi	J	V	S	Total
00:00 - 02:59	0.0%	0.0%	0.0%	0.0%	0.0%	0.0%	0.0%	0.0%
03:00 - 05:59	0.0%	0.0%	0.0%	0.0%	0.0%	0.0%	0.0%	0.0%
06:00 - 08:59	0.0%	0.0%	0.0%	0.0%	0.0%	0.0%	0.0%	0.0%
09:00 - 11:59	0.0%	0.0%	14.3%	0.0%	0.0%	0.0%	0.0%	14.3%
12:00 - 14:59	0.0%	0.0%	0.0%	0.0%	14.3%	0.0%	0.0%	14.3%
15:00 - 17:59	0.0%	0.0%	0.0%	0.0%	0.0%	0.0%	0.0%	0.0%
18:00 - 20:59	28.6%	0.0%	0.0%	0.0%	0.0%	42.9%	0.0%	71.4%
21:00 - 23:59	0.0%	0.0%	0.0%	0.0%	0.0%	0.0%	0.0%	0.0%
Total	28.6%	0.0%	14.3%	0.0%	14.3%	42.9%	0.0%	100.0%



10

MODERNA DE LA CRUZ II CORREDORES PRIORITARIOS

SEGURIDAD

SECRETARÍA DE SEGURIDAD

VIOLENCIA FAMILIAR

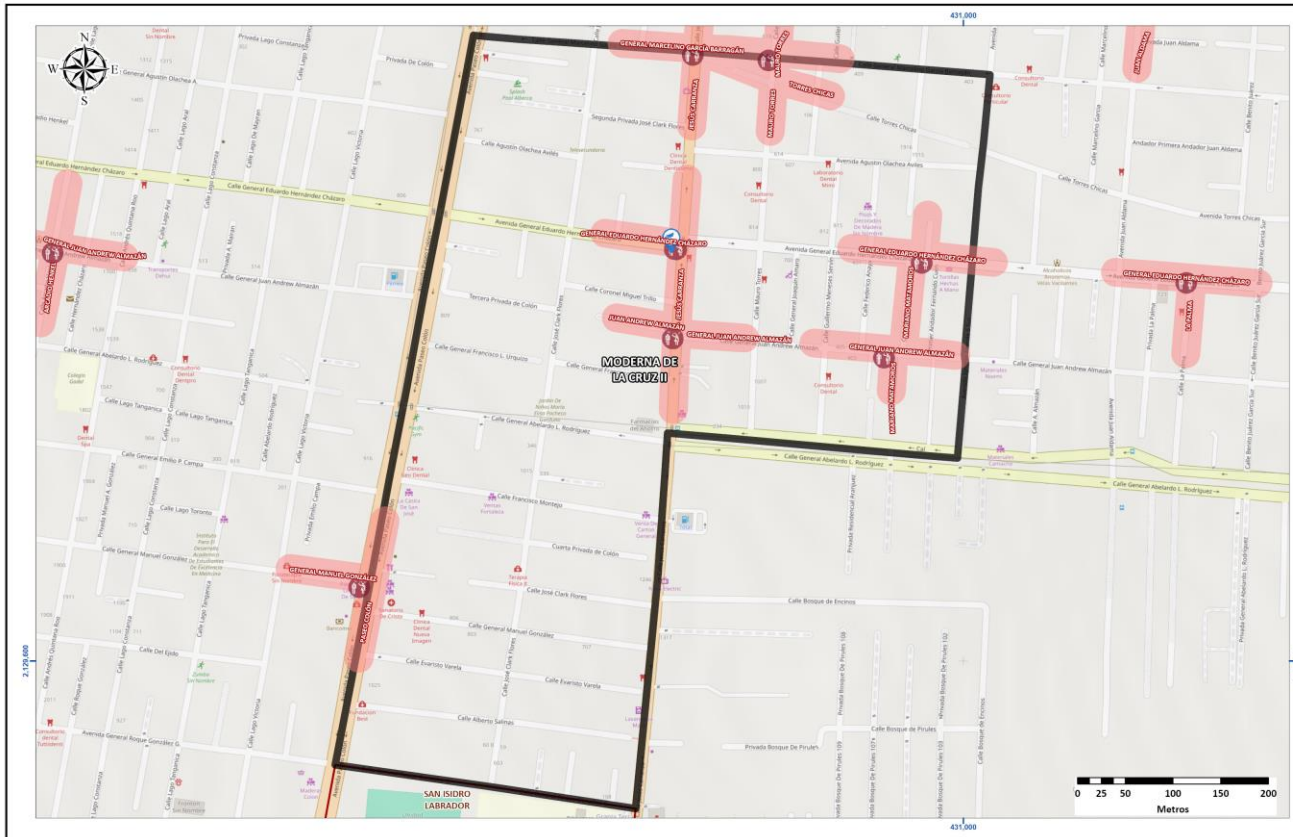
CALLE JESÚS CARRANZA



Horario de atención

00:00 - 02:59
JUEVES

100%



Horario	D	L	Ma	Mi	J	V	S	Total
00:00 - 02:59	0.0%	0.0%	0.0%	14.3%	14.3%	0.0%	14.3%	42.9%
03:00 - 05:59	0.0%	0.0%	0.0%	0.0%	0.0%	0.0%	0.0%	0.0%
06:00 - 08:59	0.0%	28.6%	0.0%	0.0%	0.0%	0.0%	0.0%	28.6%
09:00 - 11:59	0.0%	0.0%	0.0%	0.0%	0.0%	0.0%	0.0%	0.0%
12:00 - 14:59	0.0%	0.0%	0.0%	0.0%	0.0%	0.0%	0.0%	0.0%
15:00 - 17:59	0.0%	0.0%	0.0%	0.0%	0.0%	0.0%	0.0%	0.0%
18:00 - 20:59	0.0%	0.0%	0.0%	14.3%	0.0%	0.0%	0.0%	14.3%
21:00 - 23:59	14.3%	0.0%	0.0%	0.0%	0.0%	0.0%	0.0%	14.3%
Total	14.3%	28.6%	0.0%	28.6%	14.3%	0.0%	14.3%	100.0%