

IXTAPALUCA



GOBIERNO DEL
ESTADO DE
MÉXICO

SEGURIDAD
SECRETARÍA DE SEGURIDAD

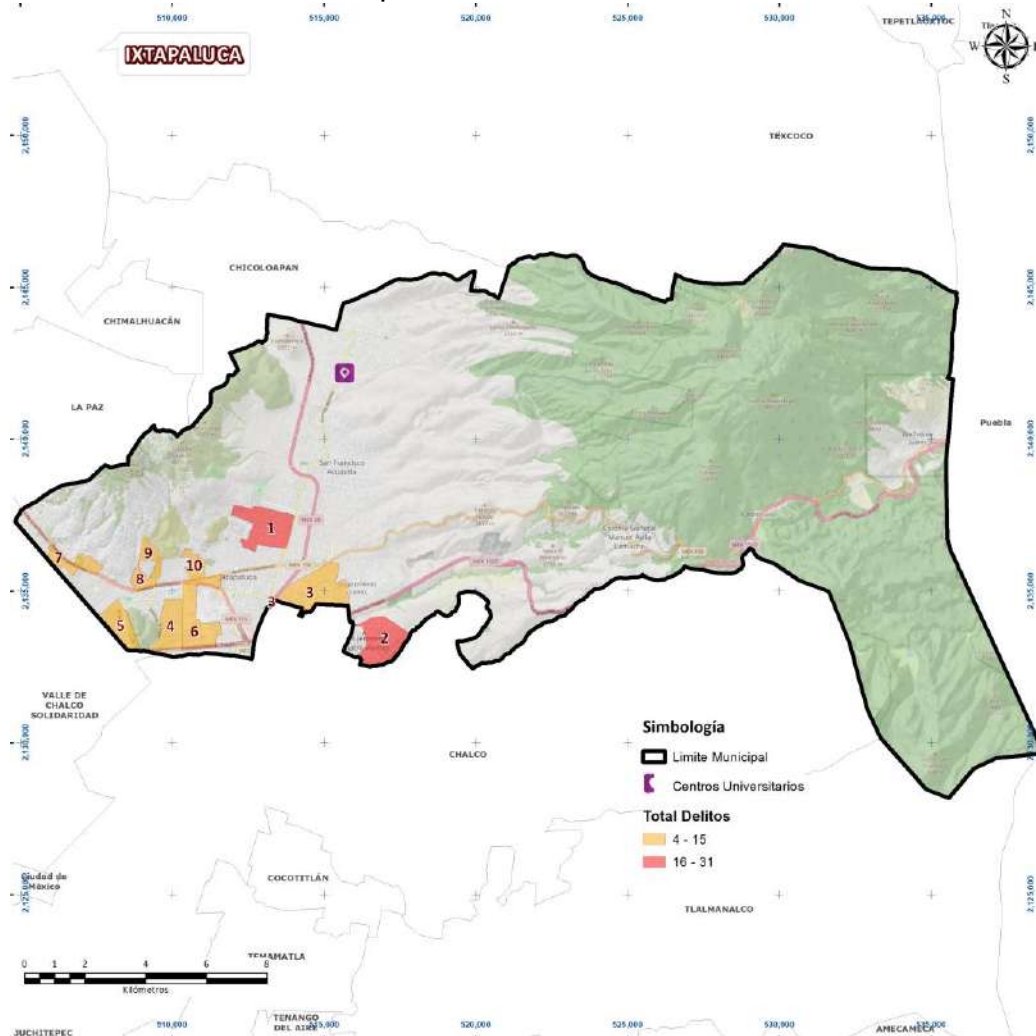
1 al 30 de abril de 2024

**VIOLENCIA DE GÉNERO
REPORTE EJECUTIVO**

Fuente: Fiscalía General de Justicia - Delitos Vinculados a Violencia de Género (FGJ-VG),
Fiscalía General de Justicia - Delitos de Alto Impacto (FGJ-DAI), Sistema de Emergencia 9-1-1
(SE911) y Sistema de Denuncia Anónima 089 (SDA089)

MAYO 2024

- Cabe destacar, que derivado de este análisis para el mes de abril en el municipio de Ixtapaluca, se identificaron diez colonias de atención prioritaria, las cuales concentran el 47% de la incidencia del municipio.



Colonias repetidas en el periodo

No.	Colonia	Inc.	%	% Acum.
1	LOS HÉROES	20	10.15	10.15
2	CUATRO VIENTOS	19	9.64	19.80
3	GUADALUPE	13	6.60	26.40
4	ALFREDO DEL MAZO	9	4.57	30.96
5	EL MOLINO	8	4.06	35.03
6	GEOVILLAS SANTA BÁRBARA	6	3.05	38.07
7	AYOTLA	5	2.54	40.61
8	VALLE VERDE	4	2.03	42.64
9	CERRO DEL TEJOLOTE 2	4	2.03	44.67
10	ARBOLADA IXTAPALUCA	4	2.03	46.70

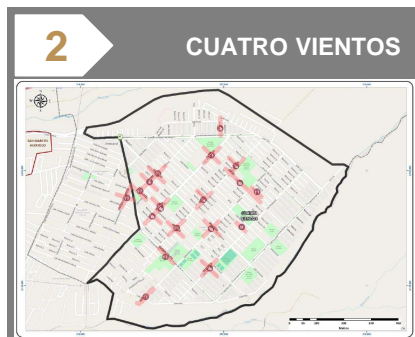
DELITOS	INCIDENCIA	% DE INCIDENCIA
VIOLENCIA CONTRA LA MUJER	101	51.27
VIOLENCIA FAMILIAR	48	24.37
LESIONES	24	12.18
VIOLENCIA DE PAREJA	19	9.64
HOSTIGAMIENTO Y ACOSO SEXUAL	3	1.52
SUSTRACCIÓN DE HIJO	1	0.51
VIOLENCIA DE GÉNERO	1	0.51
TOTAL GENERAL	197	100.0%

Composición de los datos por fuente:

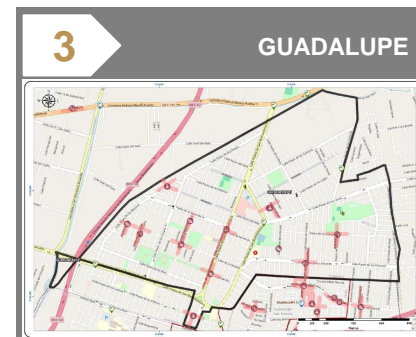
FGJ-VG:	FGJ-DAI:	SE911:	SDA089:
0.00%	0.00%	98.48%	1.52%



	VIOLENCIA CONTRA LA MUJER	09:00 - 11:59	65%
	VIOLENCIA FAMILIAR	15:00 - 17:59	15%
	LESIONES	09:00 - 11:59 00:00 - 02:59	10%



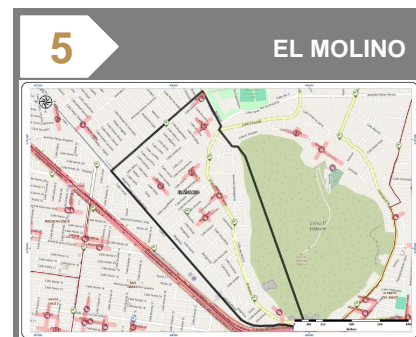
	VIOLENCIA CONTRA LA MUJER	09:00 - 11:59	42%
	VIOLENCIA FAMILIAR	15:00 - 17:59	42%
	VIOLENCIA DE PAREJA	09:00 - 11:59 15:00 - 17:59	11%



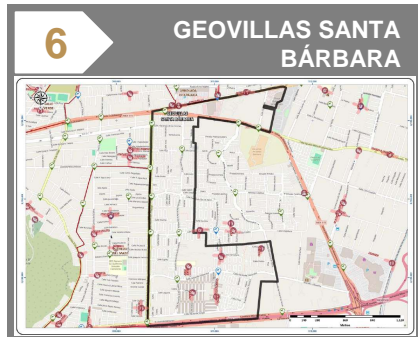
	VIOLENCIA CONTRA LA MUJER	12:00 - 14:59	46%
	VIOLENCIA FAMILIAR	18:00 - 20:59 06:00 - 08:59	23%
	LESIONES	00:00 - 02:59	23%



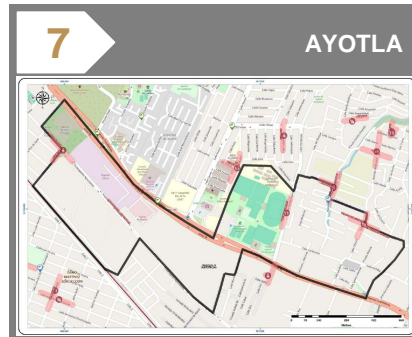
	VIOLENCIA CONTRA LA MUJER	09:00 - 11:59	67%
	LESIONES	18:00 - 20:59 06:00 - 08:59	22%
	VIOLENCIA FAMILIAR	12:00 - 14:59	11%



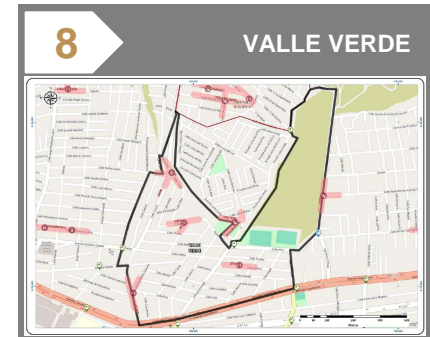
	VIOLENCIA CONTRA LA MUJER	06:00 - 08:59	63%
	VIOLENCIA DE PAREJA	00:00 - 02:59	25%
	VIOLENCIA FAMILIAR	18:00 - 20:59	13%



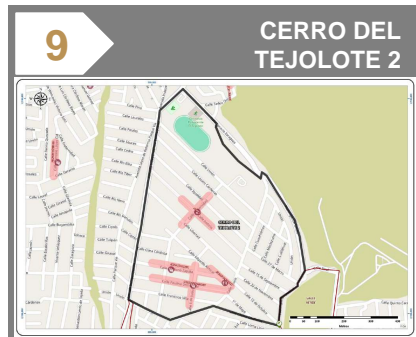
	VIOLENCIA FAMILIAR	21:00 - 23:59	50%
	VIOLENCIA CONTRA LA MUJER	18:00 - 20:59	50%



	LESIONES	18:00 - 20:59	60%
	VIOLENCIA CONTRA LA MUJER	12:00 - 14:59	20%
	VIOLENCIA FAMILIAR	12:00 - 14:59	20%



	VIOLENCIA FAMILIAR	15:00 - 17:59 21:00 - 23:59	75%
	VIOLENCIA DE PAREJA	00:00 - 02:59	25%



	VIOLENCIA CONTRA LA MUJER	21:00 - 23:59 15:00 - 17:59	50%
	VIOLENCIA FAMILIAR	12:00 - 14:59	25%
	LESIONES	21:00 - 23:59	25%



	VIOLENCIA CONTRA LA MUJER	21:00 - 23:59 18:00 - 20:59	50%
	VIOLENCIA FAMILIAR	15:00 - 17:59	25%
	LESIONES	09:00 - 11:59	25%



VIOLENCIA CONTRA LA MUJER

CALLE IGNACIO ZARAGOZA

Horario de atención **09:00 - 11:59 SÁBADO**



65%

VIOLENCIA FAMILIAR

CALLE JAVIER MINA

Horario de atención **15:00 - 17:59 LUNES**



15%

LESIONES

CALLE JOSÉ MARÍA MORELOS MANZANA 9 LOTE 4

Horario de atención **09:00 - 11:59 MIÉRCOLES**



10%

VIOLENCIA DE PAREJA

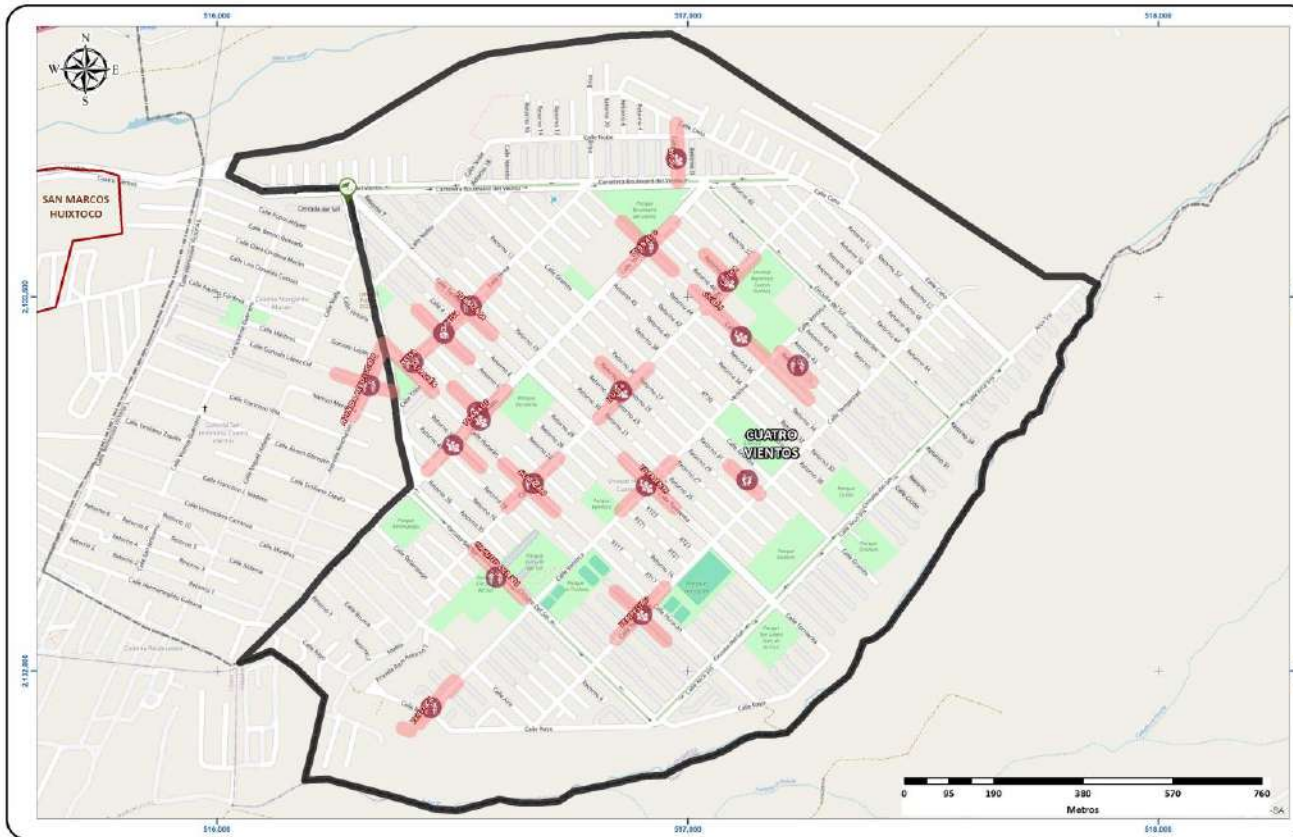
CALLE IGNACIO ALLENDE

Horario de atención **21:00 - 23:59 LUNES**



10%

Horario	D	L	Ma	Mi	J	V	S	Total
00:00 - 02:59	0.0%	5.0%	0.0%	5.0%	0.0%	0.0%	0.0%	10.0%
03:00 - 05:59	0.0%	0.0%	0.0%	0.0%	0.0%	0.0%	5.0%	5.0%
06:00 - 08:59	0.0%	5.0%	0.0%	0.0%	0.0%	0.0%	0.0%	5.0%
09:00 - 11:59	5.0%	0.0%	5.0%	10.0%	0.0%	0.0%	20.0%	40.0%
12:00 - 14:59	0.0%	5.0%	0.0%	0.0%	0.0%	0.0%	0.0%	5.0%
15:00 - 17:59	0.0%	10.0%	0.0%	5.0%	0.0%	0.0%	0.0%	15.0%
18:00 - 20:59	0.0%	10.0%	0.0%	0.0%	0.0%	0.0%	0.0%	10.0%
21:00 - 23:59	0.0%	5.0%	0.0%	5.0%	0.0%	0.0%	0.0%	10.0%
Total	5.0%	40.0%	5.0%	25.0%	0.0%	0.0%	25.0%	100.0%



VIOLENCIA CONTRA LA MUJER

CALLE CICLÓN



Horario de atención
18:00 - 20:59
MARTES

42%

VIOLENCIA FAMILIAR

CALLE LLUVIA



Horario de atención
12:00 - 14:59
JUEVES

42%

VIOLENCIA DE PAREJA

CALLE TEMPESTAD RETORNO 31



Horario de atención
09:00 - 11:59
SÁBADO

11%

LESIONES

CALLE BRISA RETORNO 5



Horario de atención
15:00 - 17:59
LUNES

5%

Horario	D	L	Ma	Mi	J	V	S	Total
00:00 - 02:59	0.0%	0.0%	0.0%	0.0%	0.0%	0.0%	0.0%	0.0%
03:00 - 05:59	5.3%	0.0%	0.0%	0.0%	0.0%	0.0%	5.3%	10.5%
06:00 - 08:59	0.0%	0.0%	0.0%	0.0%	0.0%	0.0%	0.0%	0.0%
09:00 - 11:59	5.3%	0.0%	0.0%	0.0%	0.0%	10.5%	10.5%	26.3%
12:00 - 14:59	0.0%	0.0%	5.3%	0.0%	5.3%	0.0%	0.0%	10.5%
15:00 - 17:59	0.0%	5.3%	10.5%	10.5%	5.3%	0.0%	5.3%	36.8%
18:00 - 20:59	0.0%	0.0%	5.3%	0.0%	0.0%	0.0%	0.0%	5.3%
21:00 - 23:59	0.0%	0.0%	0.0%	0.0%	0.0%	10.5%	0.0%	10.5%
Total	10.5%	5.3%	21.1%	10.5%	10.5%	21.1%	21.1%	100.0%



VIOLENCIA CONTRA LA MUJER

PASEO DE LOS EUCALIPTOS

Horario de atención: **12:00 - 14:59**
JUEVES



46%

VIOLENCIA FAMILIAR

PASEO DE LOS VOLCANES

Horario de atención: **06:00 - 08:59**
LUNES



23%

LESIONES

PASEO DE LOS BOSQUES

Horario de atención: **00:00 - 02:59**
JUEVES



23%

VIOLENCIA DE PAREJA

CALLE DE LAS MINAS

Horario de atención: **12:00 - 14:59**
JUEVES



8%

Horario	D	L	Ma	Mi	J	V	S	Total
00:00 - 02:59	0.0%	0.0%	0.0%	7.7%	7.7%	0.0%	0.0%	15.4%
03:00 - 05:59	0.0%	0.0%	0.0%	0.0%	0.0%	0.0%	0.0%	0.0%
06:00 - 08:59	0.0%	7.7%	0.0%	0.0%	0.0%	0.0%	7.7%	15.4%
09:00 - 11:59	0.0%	0.0%	0.0%	0.0%	0.0%	0.0%	7.7%	7.7%
12:00 - 14:59	0.0%	0.0%	0.0%	0.0%	15.4%	0.0%	0.0%	15.4%
15:00 - 17:59	0.0%	0.0%	0.0%	7.7%	7.7%	0.0%	0.0%	15.4%
18:00 - 20:59	0.0%	0.0%	7.7%	0.0%	7.7%	0.0%	7.7%	23.1%
21:00 - 23:59	0.0%	0.0%	0.0%	7.7%	0.0%	0.0%	0.0%	7.7%
Total	0.0%	7.7%	7.7%	23.1%	38.5%	0.0%	23.1%	100.0%



VIOLENCIA CONTRA LA MUJER

AVENIDA CASINO DE LA SELVA

Horario de atención: **09:00 - 11:59**
MIÉRCOLES



67%

LESIONES

CALLE REAL DEL PUENTE

Horario de atención: **18:00 - 20:59**
MARTES



22%

VIOLENCIA FAMILIAR

CALLE ARAUCARIA

Horario de atención: **12:00 - 14:59**
JUEVES



11%

Horario	D	L	Ma	Mi	J	V	S	Total
00:00 - 02:59	0.0%	0.0%	0.0%	0.0%	0.0%	0.0%	0.0%	0.0%
03:00 - 05:59	0.0%	0.0%	0.0%	0.0%	0.0%	0.0%	0.0%	0.0%
06:00 - 08:59	0.0%	0.0%	0.0%	11.1%	11.1%	0.0%	0.0%	22.2%
09:00 - 11:59	0.0%	0.0%	0.0%	11.1%	0.0%	11.1%	0.0%	22.2%
12:00 - 14:59	11.1%	0.0%	0.0%	0.0%	11.1%	0.0%	0.0%	22.2%
15:00 - 17:59	0.0%	0.0%	0.0%	0.0%	0.0%	0.0%	0.0%	0.0%
18:00 - 20:59	0.0%	0.0%	11.1%	0.0%	0.0%	0.0%	0.0%	11.1%
21:00 - 23:59	0.0%	0.0%	11.1%	0.0%	0.0%	0.0%	11.1%	22.2%
Total	11.1%	0.0%	22.2%	22.2%	22.2%	11.1%	11.1%	100.0%



VIOLENCIA CONTRA LA MUJER

CALLE GARDENIA



Horario de atención
06:00 - 08:59 LUNES

63%

VIOLENCIA DE PAREJA

CALLE CAROLINA



Horario de atención
00:00 - 02:59 MARTES

25%

VIOLENCIA FAMILIAR

CALLE GLORIA



Horario de atención
18:00 - 20:59 SÁBADO

13%

Horario	D	L	Ma	Mi	J	V	S	Total
00:00 - 02:59	0.0%	0.0%	25.0%	0.0%	0.0%	0.0%	0.0%	25.0%
03:00 - 05:59	0.0%	0.0%	0.0%	0.0%	0.0%	0.0%	0.0%	0.0%
06:00 - 08:59	0.0%	12.5%	0.0%	0.0%	0.0%	0.0%	12.5%	25.0%
09:00 - 11:59	0.0%	0.0%	0.0%	0.0%	0.0%	0.0%	0.0%	0.0%
12:00 - 14:59	12.5%	0.0%	0.0%	0.0%	0.0%	0.0%	0.0%	12.5%
15:00 - 17:59	0.0%	12.5%	0.0%	0.0%	0.0%	0.0%	0.0%	12.5%
18:00 - 20:59	0.0%	0.0%	12.5%	0.0%	0.0%	0.0%	12.5%	25.0%
21:00 - 23:59	0.0%	0.0%	0.0%	0.0%	0.0%	0.0%	0.0%	0.0%
Total	12.5%	25.0%	37.5%	0.0%	0.0%	0.0%	25.0%	100.0%



VIOLENCIA FAMILIAR

CALLE GOMERO


 Horario de
atención

 21:00 - 23:59
VIERNES

50%

VIOLENCIA CONTRA LA MUJER

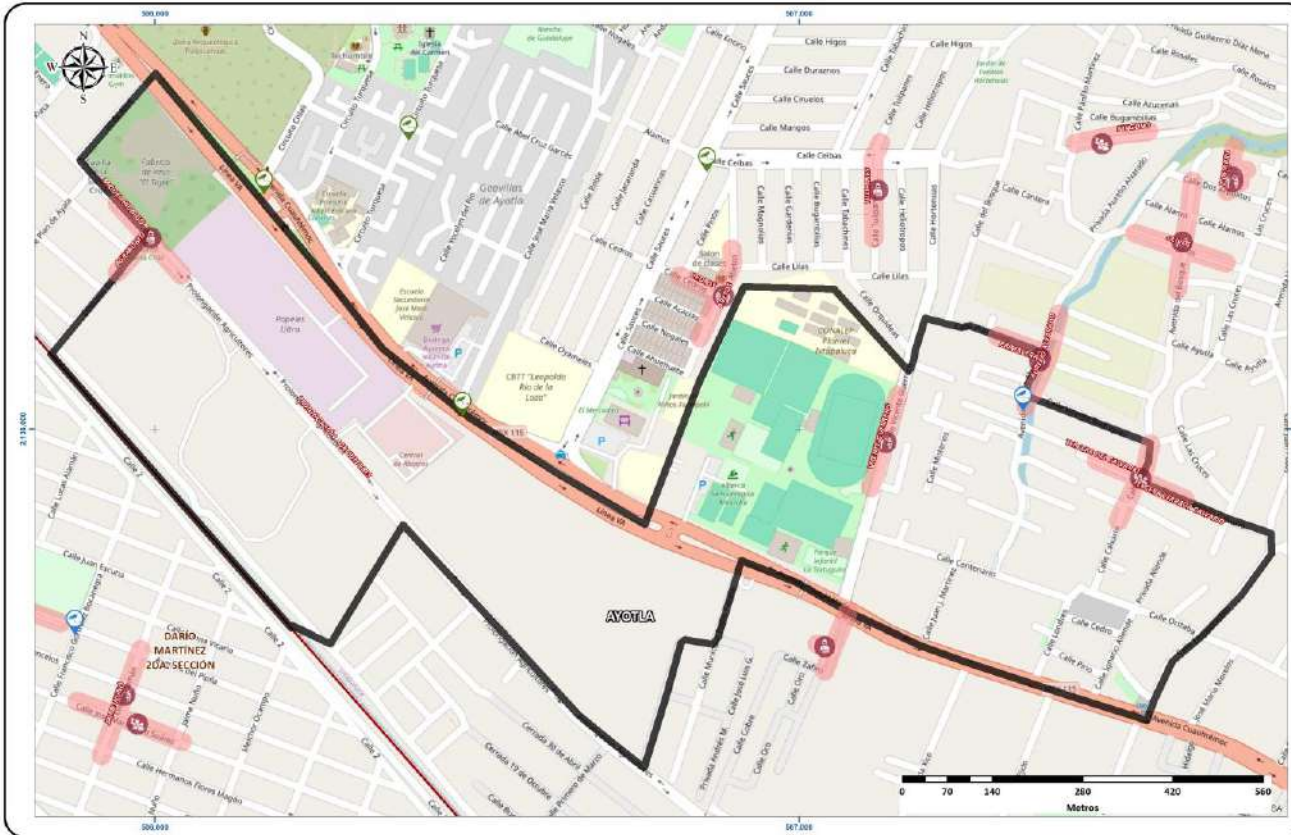
CALLE HULE


 Horario de
atención

 18:00 - 20:59
LUNES

50%

Horario	D	L	Ma	Mi	J	V	S	Total
00:00 - 02:59	0.0%	0.0%	0.0%	0.0%	0.0%	0.0%	0.0%	0.0%
03:00 - 05:59	0.0%	0.0%	0.0%	0.0%	0.0%	0.0%	0.0%	0.0%
06:00 - 08:59	0.0%	0.0%	0.0%	0.0%	0.0%	0.0%	0.0%	0.0%
09:00 - 11:59	0.0%	0.0%	0.0%	0.0%	0.0%	16.7%	0.0%	16.7%
12:00 - 14:59	0.0%	0.0%	0.0%	0.0%	0.0%	0.0%	0.0%	0.0%
15:00 - 17:59	0.0%	33.3%	0.0%	0.0%	0.0%	0.0%	0.0%	33.3%
18:00 - 20:59	0.0%	16.7%	0.0%	16.7%	0.0%	0.0%	0.0%	33.3%
21:00 - 23:59	0.0%	0.0%	0.0%	0.0%	0.0%	16.7%	0.0%	16.7%
Total	0.0%	50.0%	0.0%	16.7%	0.0%	33.3%	0.0%	100.0%



LESIONES

CALLE PRIMAVERA

Horario de atención
21:00 - 23:59
DOMINGO



60%

VIOLENCIA CONTRA LA MUJER

CALLE CALVARIO

Horario de atención
12:00 - 14:59
LUNES



20%

VIOLENCIA FAMILIAR

CALLE VICENTE GUERRERO

Horario de atención
12:00 - 14:59
LUNES



20%

Horario	D	L	Ma	Mi	J	V	S	Total
00:00 - 02:59	0.0%	0.0%	0.0%	0.0%	0.0%	0.0%	0.0%	0.0%
03:00 - 05:59	0.0%	20.0%	0.0%	0.0%	0.0%	0.0%	0.0%	20.0%
06:00 - 08:59	0.0%	0.0%	0.0%	0.0%	0.0%	0.0%	0.0%	0.0%
09:00 - 11:59	0.0%	0.0%	0.0%	0.0%	0.0%	0.0%	0.0%	0.0%
12:00 - 14:59	0.0%	40.0%	0.0%	0.0%	0.0%	0.0%	0.0%	40.0%
15:00 - 17:59	0.0%	0.0%	0.0%	0.0%	0.0%	0.0%	0.0%	0.0%
18:00 - 20:59	0.0%	0.0%	0.0%	20.0%	0.0%	0.0%	0.0%	20.0%
21:00 - 23:59	20.0%	0.0%	0.0%	0.0%	0.0%	0.0%	0.0%	20.0%
Total	20.0%	60.0%	0.0%	20.0%	0.0%	0.0%	0.0%	100.0%



VIOLENCIA FAMILIAR

CALLE CAPULÍN



Horario de atención
21:00 - 23:59
MIÉRCOLES

75%

VIOLENCIA DE PAREJA

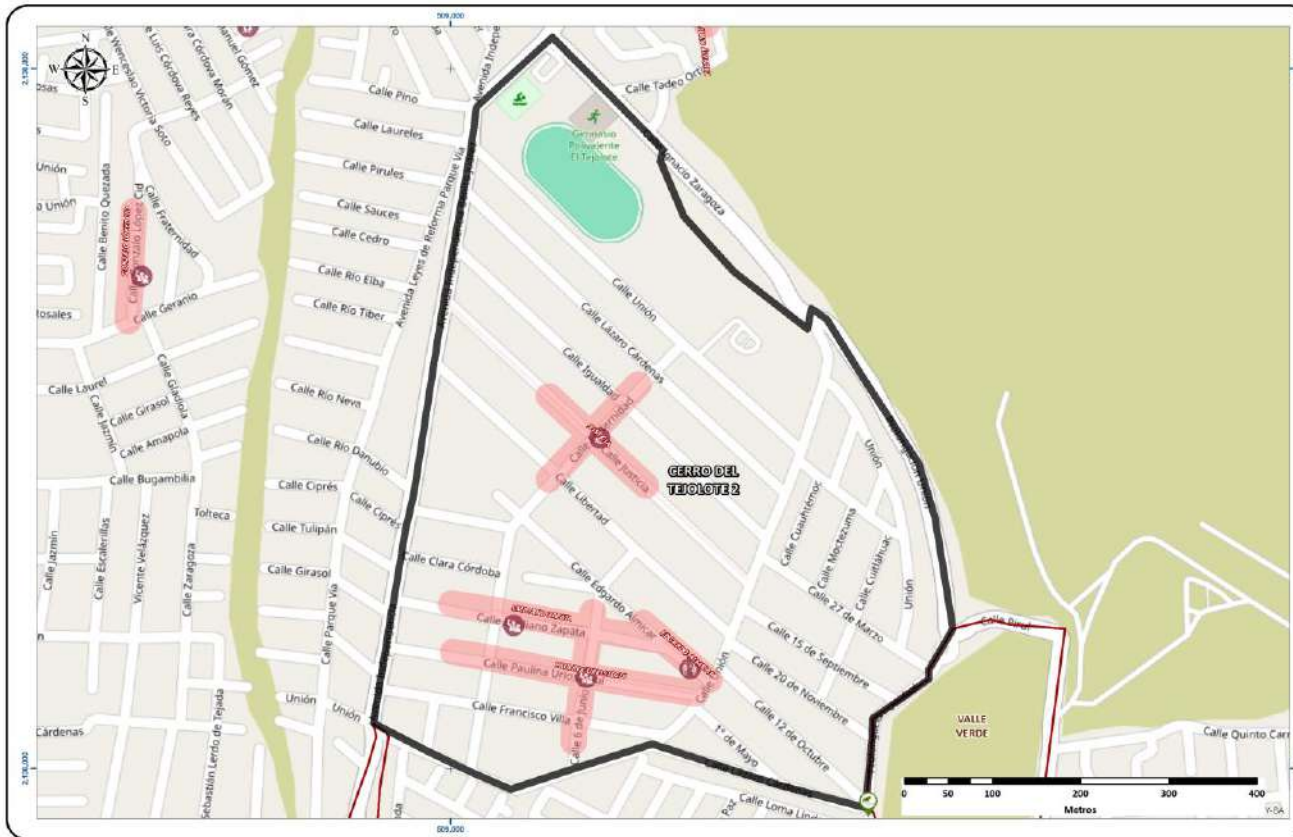
CALLE LAUREL



Horario de atención
00:00 - 02:59
MARTES

25%

Horario	D	L	Ma	Mi	J	V	S	Total
00:00 - 02:59	0.0%	0.0%	25.0%	0.0%	0.0%	0.0%	0.0%	25.0%
03:00 - 05:59	0.0%	0.0%	0.0%	0.0%	0.0%	0.0%	0.0%	0.0%
06:00 - 08:59	0.0%	0.0%	0.0%	0.0%	0.0%	0.0%	0.0%	0.0%
09:00 - 11:59	0.0%	0.0%	0.0%	0.0%	0.0%	0.0%	0.0%	0.0%
12:00 - 14:59	0.0%	0.0%	0.0%	0.0%	0.0%	0.0%	0.0%	0.0%
15:00 - 17:59	25.0%	0.0%	0.0%	0.0%	0.0%	0.0%	25.0%	50.0%
18:00 - 20:59	0.0%	0.0%	0.0%	0.0%	0.0%	0.0%	0.0%	0.0%
21:00 - 23:59	0.0%	0.0%	0.0%	25.0%	0.0%	0.0%	0.0%	25.0%
Total	25.0%	0.0%	25.0%	25.0%	0.0%	0.0%	25.0%	100.0%



VIOLENCIA CONTRA LA MUJER

CALLE PAULINA URIOSTEGUI

Horario de atención **21:00 - 23:59**
MIÉRCOLES



50%

VIOLENCIA FAMILIAR

CALLE EDGARDO ALMICAR

Horario de atención **12:00 - 14:59**
VIERNES



25%

LESIONES

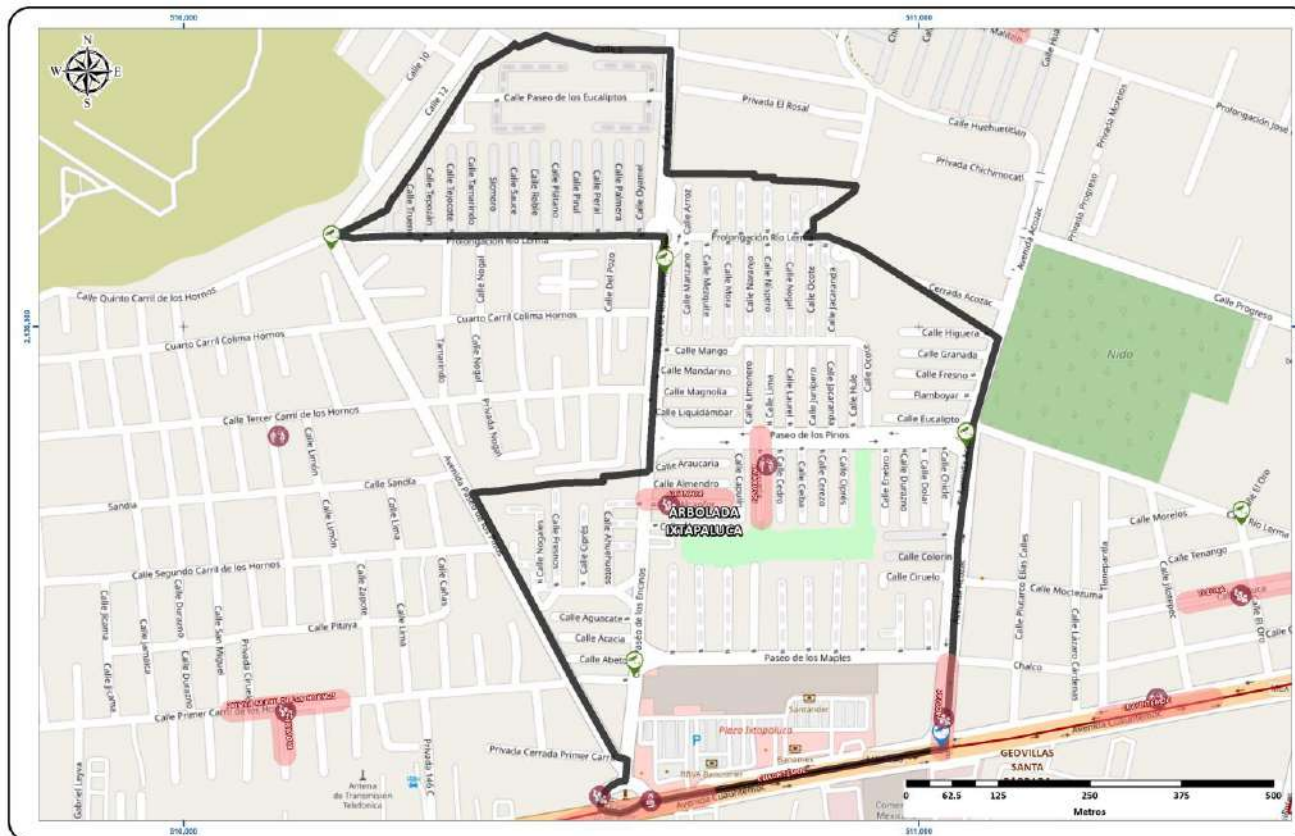
CALLE FRATERNIDAD

Horario de atención **21:00 - 23:59**
VIERNES



25%

Horario	D	L	Ma	Mi	J	V	S	Total
00:00 - 02:59	0.0%	0.0%	0.0%	0.0%	0.0%	0.0%	0.0%	0.0%
03:00 - 05:59	0.0%	0.0%	0.0%	0.0%	0.0%	0.0%	0.0%	0.0%
06:00 - 08:59	0.0%	0.0%	0.0%	0.0%	0.0%	0.0%	0.0%	0.0%
09:00 - 11:59	0.0%	0.0%	0.0%	0.0%	0.0%	0.0%	0.0%	0.0%
12:00 - 14:59	0.0%	0.0%	0.0%	0.0%	0.0%	25.0%	0.0%	25.0%
15:00 - 17:59	0.0%	0.0%	25.0%	0.0%	0.0%	0.0%	0.0%	25.0%
18:00 - 20:59	0.0%	0.0%	0.0%	0.0%	0.0%	0.0%	0.0%	0.0%
21:00 - 23:59	0.0%	0.0%	0.0%	25.0%	0.0%	25.0%	0.0%	50.0%
Total	0.0%	0.0%	25.0%	25.0%	0.0%	50.0%	0.0%	100.0%



VIOLENCIA CONTRA LA MUJER

AVENIDA ACOZAC

Horario de atención: 21:00 - 23:59 VIERNES



50%

VIOLENCIA FAMILIAR

CALLE CASUARINA

Horario de atención: 15:00 - 17:59 VIERNES



25%

LESIONES

AVENIDA CUAUHTÉMOC

Horario de atención: 09:00 - 11:59 VIERNES



25%

Horario	D	L	Ma	Mi	J	V	S	Total
00:00 - 02:59	0.0%	0.0%	0.0%	0.0%	0.0%	0.0%	0.0%	0.0%
03:00 - 05:59	0.0%	0.0%	0.0%	0.0%	0.0%	0.0%	0.0%	0.0%
06:00 - 08:59	0.0%	0.0%	0.0%	0.0%	0.0%	0.0%	0.0%	0.0%
09:00 - 11:59	0.0%	0.0%	0.0%	0.0%	0.0%	25.0%	0.0%	25.0%
12:00 - 14:59	0.0%	0.0%	0.0%	0.0%	0.0%	0.0%	0.0%	0.0%
15:00 - 17:59	0.0%	0.0%	0.0%	0.0%	0.0%	25.0%	0.0%	25.0%
18:00 - 20:59	0.0%	0.0%	0.0%	25.0%	0.0%	0.0%	0.0%	25.0%
21:00 - 23:59	0.0%	0.0%	0.0%	0.0%	0.0%	25.0%	0.0%	25.0%
Total	0.0%	0.0%	0.0%	25.0%	0.0%	75.0%	0.0%	100.0%