

TLALNEPANTLA DE BAZ

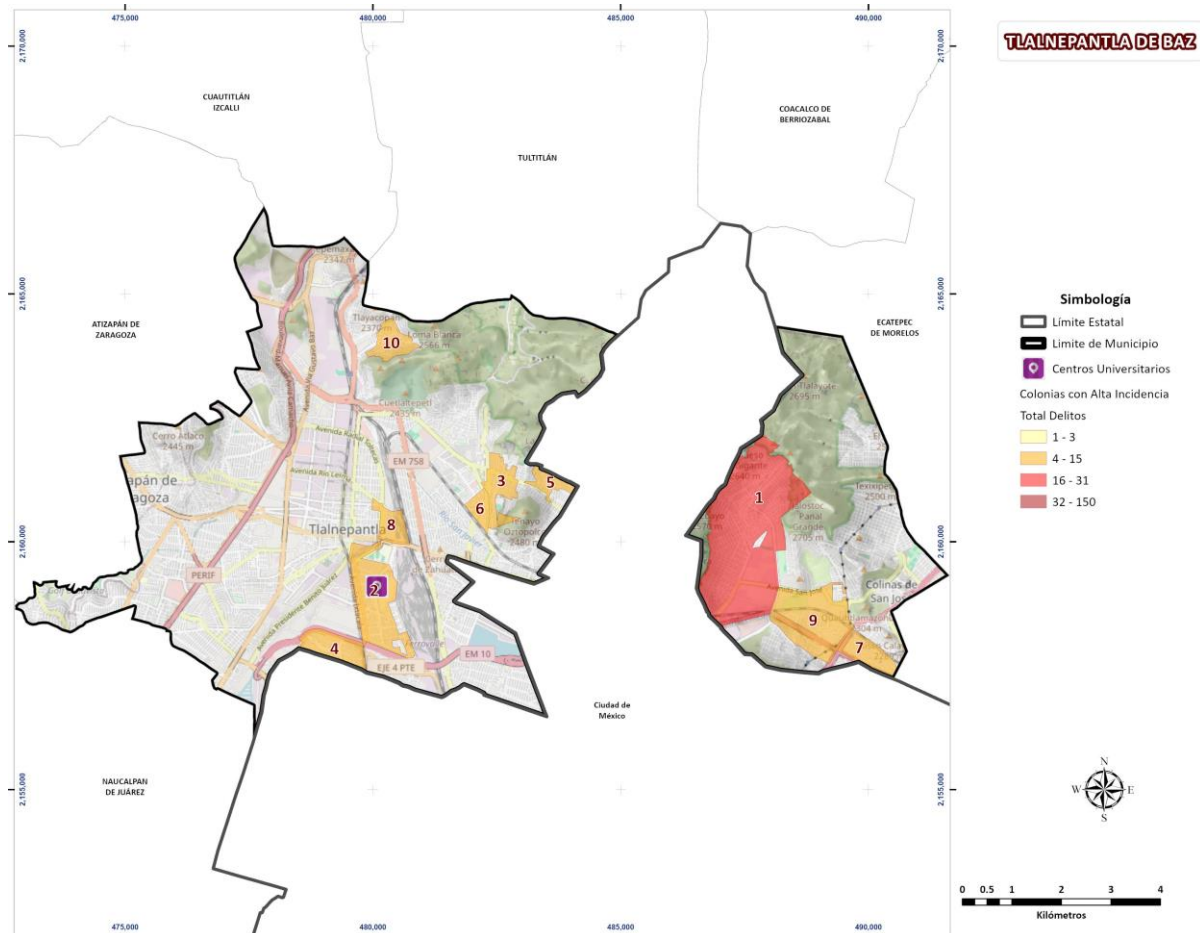
1 al 31 de diciembre de 2024
VIOLENCIA DE GÉNERO
REPORTE EJECUTIVO

Fuente: Fiscalía General de Justicia - Delitos Vinculados a Violencia de Género (FGJ-VG), Fiscalía General de Justicia - Delitos de Alto Impacto (FGJ-DAI), Sistema de Emergencia 9-1-1 (SE911) y Sistema de Denuncia Anónima 089 (SDA089)





- Cabe destacar, que derivado de este análisis para el mes de diciembre en el municipio de Tlalnepantla De Baz, se identificaron diez colonias de atención prioritaria, las cuales concentran el 32% de la incidencia del municipio.



Colonias repetidas en el periodo

No.	Colonia	Inc.	%	% Acum.
1	LÁZARO CÁRDENAS 1	17	6.44	6.44
2	LOS REYES IXTACALA 2DA. SECCIÓN	13	4.92	11.36
3	EL TENAYO 1	9	3.41	14.77
4	EL ROSARIO	8	3.03	17.80
5	SAN MIGUEL CHALMA	7	2.65	20.45
6	TABLA HONDA 2	7	2.65	23.11
7	LA LAGUNA	6	2.27	25.38
8	SAN JAVIER	6	2.27	27.65
9	SAN JUAN IXHUATEPEC	6	2.27	29.92
10	SANTA MARÍA TLAYACAMPA	5	1.89	31.82

DELITOS	INCIDENCIA	% DE INCIDENCIA
VIOLENCIA FAMILIAR	177	67.05
LESIONES	31	11.74
VIOLENCIA DE PAREJA	27	10.23
VIOLENCIA CONTRA LA MUJER	19	7.20
HOSTIGAMIENTO Y ACOSO SEXUAL	6	2.27
ABUSO SEXUAL	2	0.76
HOMICIDIO	1	0.38
VIOLENCIA DE GÉNERO	1	0.38
TOTAL GENERAL	264	100.0%

Composición de los datos por fuente:

FGJ-VG:	FGJ-DAI:	SE911:	SDA089:
0.00%	0.00%	99.24%	0.76%



TLALNEPANTLA DE BAZ

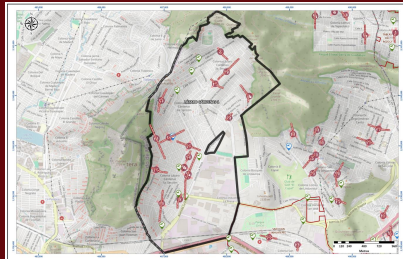
COLONIAS DE ATENCIÓN

32%

SEGURIDAD

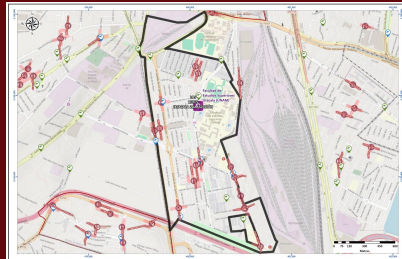
SECRETARÍA DE SEGURIDAD

1 LÁZARO CÁRDENAS 1



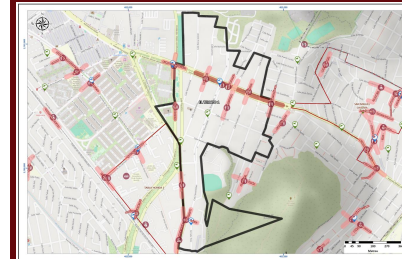
	VIOLENCIA FAMILIAR	00:00 - 02:59	71%
	VIOLENCIA CONTRA LA MUJER	21:00 - 23:59	18%
	VIOLENCIA DE PAREJA	12:00 - 14:59	6%

2 LOS REYES IXTACALA 2DA. SECCIÓN



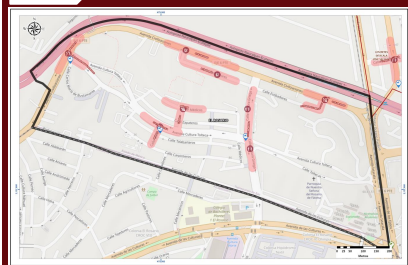
	VIOLENCIA FAMILIAR	03:00 - 05:59	92%
	HOSTIGAMIENTO Y ACOSO SEXUAL	18:00 - 20:59	8%

3 EL TENAYO 1



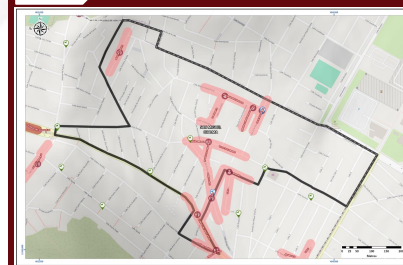
	VIOLENCIA FAMILIAR	00:00 - 02:59	100%
--	--------------------	---------------	------

4 EL ROSARIO



	VIOLENCIA FAMILIAR	00:00 - 02:59	50%
	VIOLENCIA DE PAREJA	00:00 - 02:59	25%
	VIOLENCIA CONTRA LA MUJER	18:00 - 20:59	25%

5 SAN MIGUEL CHALMA



	VIOLENCIA FAMILIAR	03:00 - 05:59	57%
	LESIONES	03:00 - 05:59	14%
	HOSTIGAMIENTO Y ACOSO SEXUAL	15:00 - 17:59	14%



TLALNEPANTLA DE BAZ

COLONIAS DE ATENCIÓN

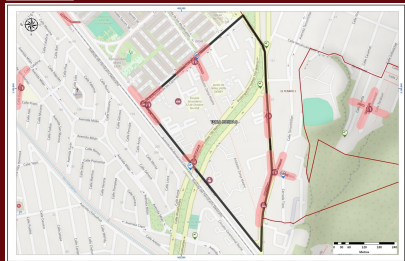
32%

SEGURIDAD

SECRETARÍA DE SEGURIDAD

6

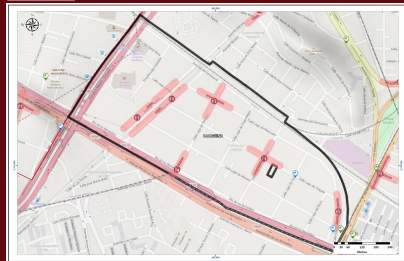
TABLA HONDA 2



	VIOLENCIA FAMILIAR	09:00 - 11:59	43%
	HOSTIGAMIENTO Y ACOSO SEXUAL	12:00 - 14:59 09:00 - 11:59	29%
	LESIONES	06:00 - 08:59	14%

7

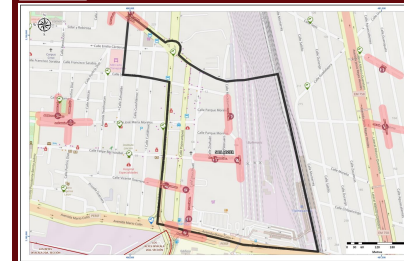
LA LAGUNA



	VIOLENCIA FAMILIAR	21:00 - 23:59	83%
	VIOLENCIA CONTRA LA MUJER	03:00 - 05:59	17%

8

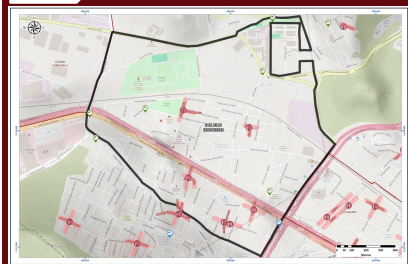
SAN JAVIER



	VIOLENCIA FAMILIAR	03:00 - 05:59	50%
	VIOLENCIA CONTRA LA MUJER	09:00 - 11:59 00:00 - 02:59	33%
	VIOLENCIA DE PAREJA	00:00 - 02:59	17%

9

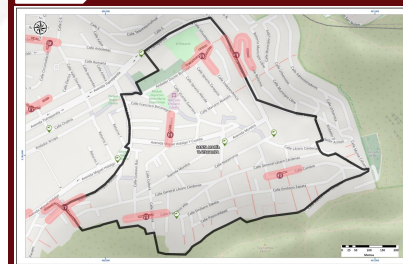
SAN JUAN IXHUATEPEC



	VIOLENCIA FAMILIAR	12:00 - 14:59	100%
--	---------------------------	---------------	------

10

SANTA MARÍA TLAYACAMPA



	VIOLENCIA FAMILIAR	09:00 - 11:59	100%
--	---------------------------	---------------	------



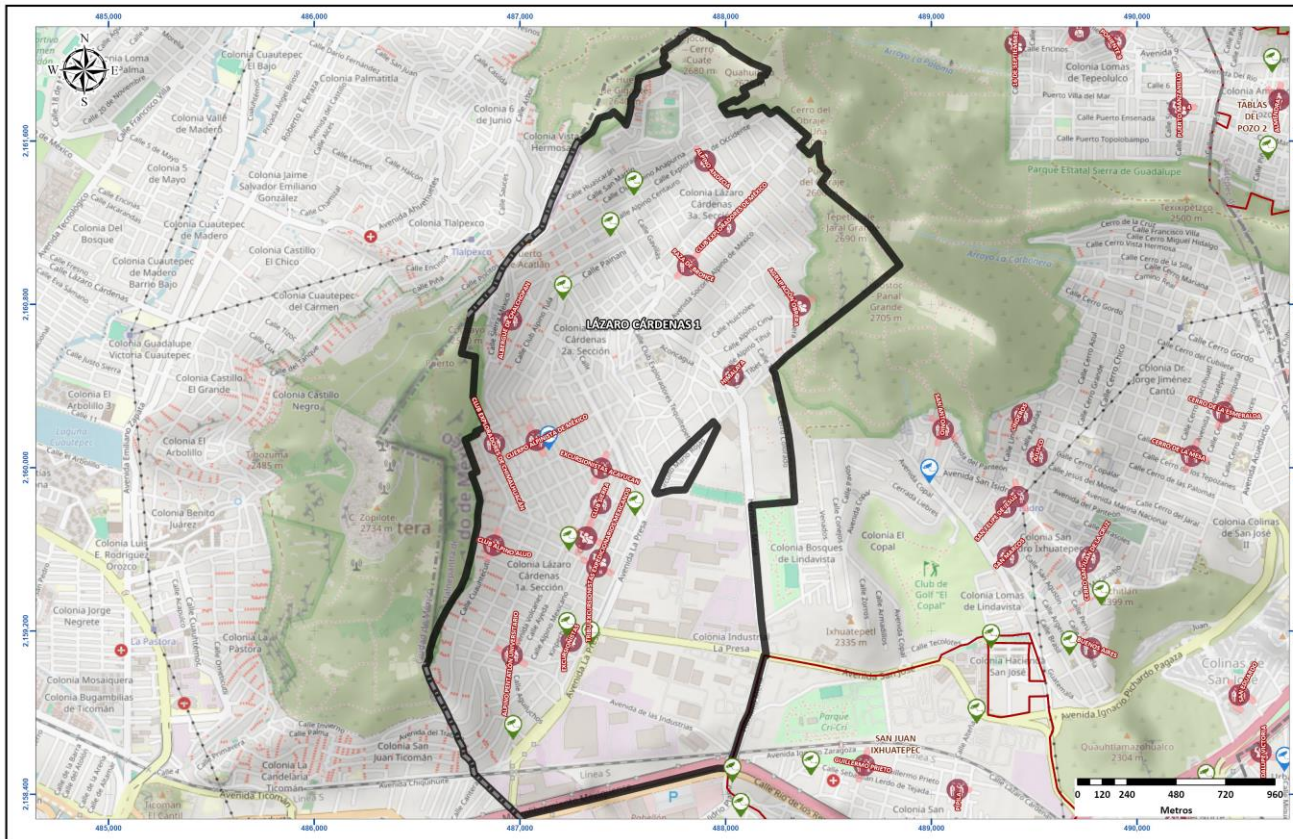
1

LÁZARO CÁRDENAS 1

CORREDORES PRIORITARIOS

SEGURIDAD

SECRETARÍA DE SEGURIDAD



VIOLENCIA FAMILIAR

CALLE CLUB EXPLORADORES DE MÉXICO



Horario de atención **15:00 - 17:59**
MARTES

71%

VIOLENCIA CONTRA LA MUJER

CALLE CLUB EXCURSIONISTAS TEPOCHTLI



Horario de atención **21:00 - 23:59**
VIERNES

18%

VIOLENCIA DE PAREJA

CALLE EXCURSIONISTAS



Horario de atención **12:00 - 14:59**
MARTES

6%

LESIONES

CALLE ALPINO ANDECIA



Horario de atención **21:00 - 23:59**
JUEVES

6%

Horario	D	L	Ma	Mi	J	V	S	Total
00:00 - 02:59	11.8%	5.9%	0.0%	0.0%	0.0%	0.0%	11.8%	29.4%
03:00 - 05:59	5.9%	0.0%	0.0%	0.0%	0.0%	0.0%	0.0%	5.9%
06:00 - 08:59	5.9%	0.0%	0.0%	0.0%	0.0%	5.9%	0.0%	11.8%
09:00 - 11:59	5.9%	5.9%	0.0%	0.0%	0.0%	0.0%	0.0%	11.8%
12:00 - 14:59	0.0%	0.0%	5.9%	0.0%	0.0%	0.0%	0.0%	5.9%
15:00 - 17:59	0.0%	0.0%	5.9%	0.0%	0.0%	0.0%	5.9%	11.8%
18:00 - 20:59	0.0%	0.0%	0.0%	0.0%	0.0%	11.8%	0.0%	11.8%
21:00 - 23:59	0.0%	0.0%	0.0%	0.0%	5.9%	5.9%	0.0%	11.8%
Total	29.4%	11.8%	11.8%	0.0%	5.9%	23.5%	17.6%	100.0%



2

LOS REYES IXTACALA 2DA. SECCIÓN

CORREDORES PRIORITARIOS

SEGURIDAD

SECRETARÍA DE SEGURIDAD



VIOLENCIA FAMILIAR

AVENIDA PASEO DEL FERROCARRIL



Horario de atención: 15:00 - 17:59
SÁBADO

92%

HOSTIGAMIENTO Y ACOSO SEXUAL

CALLE CONVENTO DE ACTOPAN



Horario de atención: 18:00 - 20:59
MARTES

8%

Horario	D	L	Ma	Mi	J	V	S	Total
00:00 - 02:59	7.7%	7.7%	0.0%	0.0%	0.0%	0.0%	0.0%	15.4%
03:00 - 05:59	0.0%	0.0%	0.0%	23.1%	7.7%	0.0%	0.0%	30.8%
06:00 - 08:59	0.0%	0.0%	0.0%	0.0%	7.7%	0.0%	0.0%	7.7%
09:00 - 11:59	0.0%	0.0%	0.0%	0.0%	0.0%	7.7%	0.0%	7.7%
12:00 - 14:59	0.0%	7.7%	0.0%	0.0%	0.0%	0.0%	0.0%	7.7%
15:00 - 17:59	0.0%	0.0%	0.0%	0.0%	0.0%	0.0%	15.4%	15.4%
18:00 - 20:59	0.0%	0.0%	7.7%	0.0%	0.0%	0.0%	0.0%	7.7%
21:00 - 23:59	0.0%	0.0%	0.0%	0.0%	7.7%	0.0%	0.0%	7.7%
Total	7.7%	15.4%	7.7%	23.1%	23.1%	7.7%	15.4%	100.0%



3

EL TENAYO 1

CORREDORES PRIORITARIOS

SEGURIDAD

SECRETARÍA DE SEGURIDAD

VIOLENCIA FAMILIAR

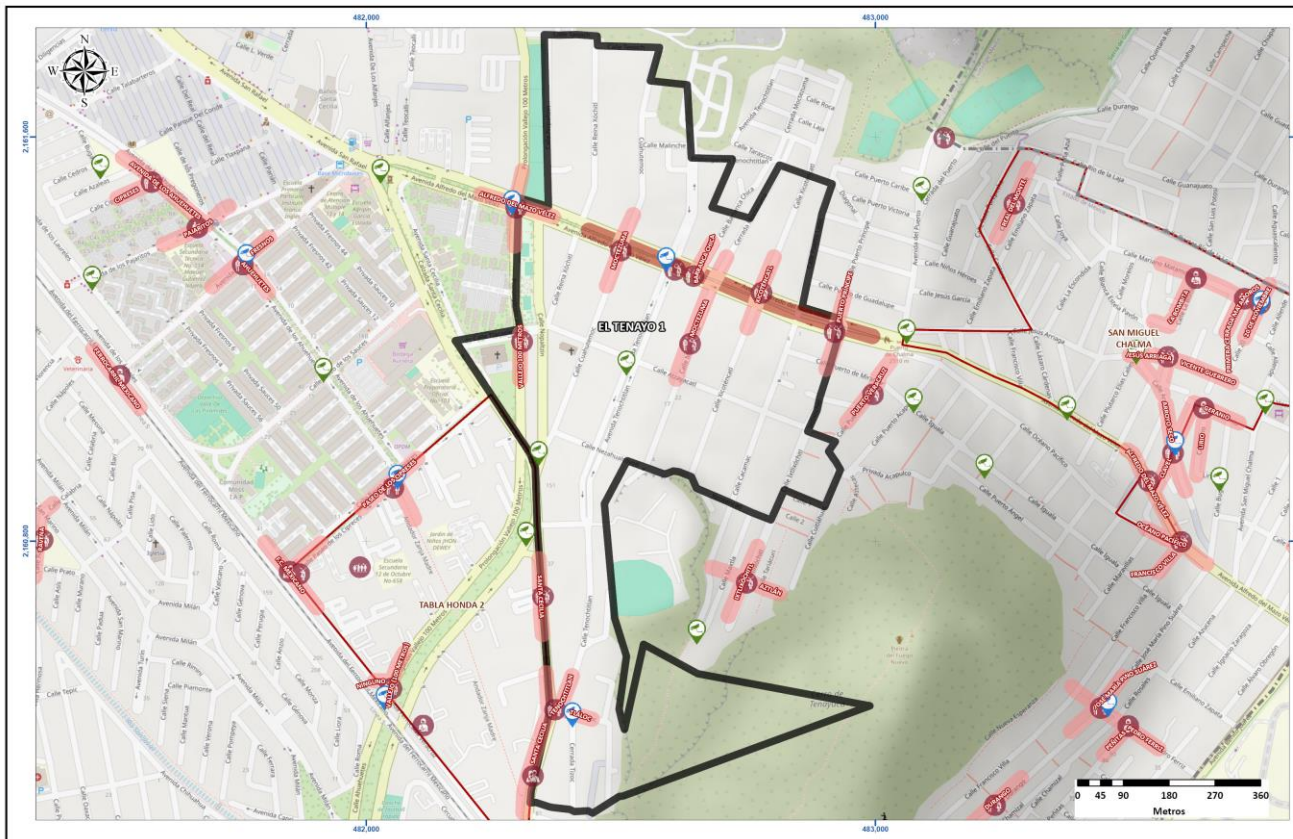
CALLE ALFREDO DEL MAZO VÉLEZ



Horario de atención

09:00 - 11:59
MIÉRCOLES

100%



Horario	D	L	Ma	Mi	J	V	S	Total
00:00 - 02:59	0.0%	0.0%	11.1%	33.3%	0.0%	0.0%	0.0%	44.4%
03:00 - 05:59	0.0%	0.0%	11.1%	0.0%	0.0%	0.0%	0.0%	11.1%
06:00 - 08:59	0.0%	0.0%	0.0%	0.0%	11.1%	0.0%	0.0%	11.1%
09:00 - 11:59	0.0%	11.1%	11.1%	11.1%	0.0%	0.0%	0.0%	33.3%
12:00 - 14:59	0.0%	0.0%	0.0%	0.0%	0.0%	0.0%	0.0%	0.0%
15:00 - 17:59	0.0%	0.0%	0.0%	0.0%	0.0%	0.0%	0.0%	0.0%
18:00 - 20:59	0.0%	0.0%	0.0%	0.0%	0.0%	0.0%	0.0%	0.0%
21:00 - 23:59	0.0%	0.0%	0.0%	0.0%	0.0%	0.0%	0.0%	0.0%
Total	0.0%	11.1%	33.3%	44.4%	11.1%	0.0%	0.0%	100.0%



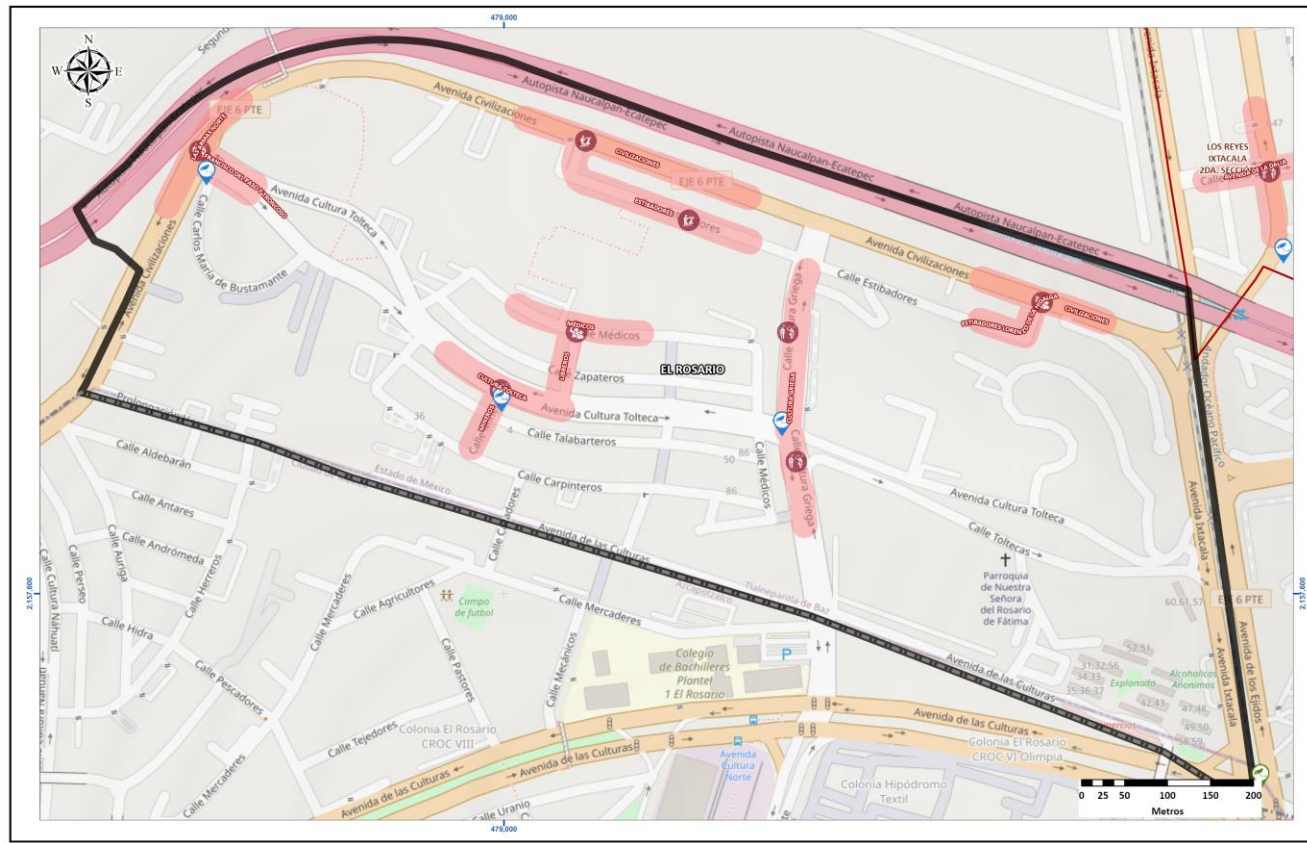
4

EL ROSARIO

CORREDORES PRIORITARIOS

SEGURIDAD

SECRETARÍA DE SEGURIDAD



VIOLENCIA FAMILIAR

AVENIDA CULTURA GRIEGA

Horario de atención: **00:00 - 02:59 MARTES**

50%

VIOLENCIA DE PAREJA

AVENIDA CIVILIZACIONES

Horario de atención: **00:00 - 02:59 JUEVES**

25%

VIOLENCIA CONTRA LA MUJER

AVENIDA CIVILIZACIONES

Horario de atención: **18:00 - 20:59 DOMINGO**

25%

Horario	D	L	Ma	Mi	J	V	S	Total
00:00 - 02:59	0.0%	0.0%	12.5%	0.0%	37.5%	0.0%	0.0%	50.0%
03:00 - 05:59	0.0%	0.0%	0.0%	0.0%	0.0%	0.0%	0.0%	0.0%
06:00 - 08:59	0.0%	0.0%	0.0%	0.0%	0.0%	0.0%	0.0%	0.0%
09:00 - 11:59	0.0%	0.0%	0.0%	0.0%	0.0%	12.5%	0.0%	12.5%
12:00 - 14:59	0.0%	0.0%	0.0%	0.0%	12.5%	0.0%	0.0%	12.5%
15:00 - 17:59	0.0%	0.0%	0.0%	0.0%	0.0%	0.0%	0.0%	0.0%
18:00 - 20:59	25.0%	0.0%	0.0%	0.0%	0.0%	0.0%	0.0%	25.0%
21:00 - 23:59	0.0%	0.0%	0.0%	0.0%	0.0%	0.0%	0.0%	0.0%
Total	25.0%	0.0%	12.5%	0.0%	50.0%	12.5%	0.0%	100.0%



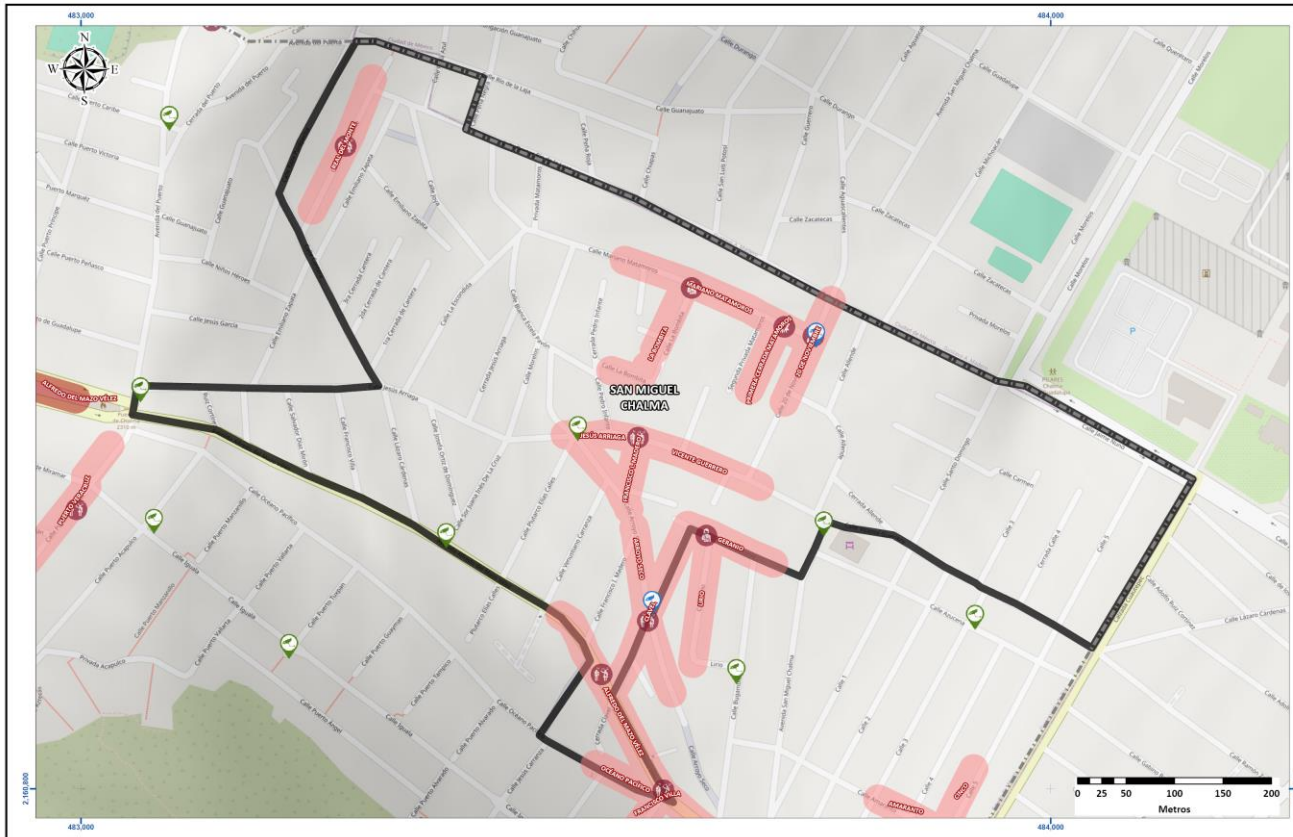
5

SAN MIGUEL CHALMA

CORREDORES PRIORITARIOS

SEGURIDAD

SECRETARÍA DE SEGURIDAD



Horario	D	L	Ma	Mi	J	V	S	Total
00:00 - 02:59	0.0%	0.0%	0.0%	0.0%	0.0%	0.0%	0.0%	0.0%
03:00 - 05:59	14.3%	0.0%	0.0%	28.6%	0.0%	0.0%	0.0%	42.9%
06:00 - 08:59	0.0%	0.0%	0.0%	0.0%	0.0%	0.0%	0.0%	0.0%
09:00 - 11:59	0.0%	0.0%	0.0%	0.0%	0.0%	0.0%	0.0%	0.0%
12:00 - 14:59	0.0%	0.0%	0.0%	0.0%	0.0%	0.0%	0.0%	0.0%
15:00 - 17:59	0.0%	14.3%	0.0%	14.3%	0.0%	0.0%	0.0%	28.6%
18:00 - 20:59	0.0%	0.0%	0.0%	0.0%	28.6%	0.0%	0.0%	28.6%
21:00 - 23:59	0.0%	0.0%	0.0%	0.0%	0.0%	0.0%	0.0%	0.0%
Total	14.3%	14.3%	0.0%	42.9%	28.6%	0.0%	0.0%	100.0%

VIOLENCIA FAMILIAR

CALLE ALFREDO DEL MAZO VÉLEZ



Horario de atención
03:00 - 05:59
MIÉRCOLES

57%

LESIONES

CALLE LA BOMBITA



Horario de atención
03:00 - 05:59
DOMINGO

14%

HOSTIGAMIENTO Y ACOSO SEXUAL

CALLE 20 DE NOVIEMBRE



Horario de atención
15:00 - 17:59
LUNES

14%

VIOLENCIA DE PAREJA

PRIMERA CERRADA MATAMOROS



Horario de atención
18:00 - 20:59
JUEVES

14%



6

TABLA HONDA 2 CORREDORES PRIORITARIOS

SEGURIDAD

SECRETARÍA DE SEGURIDAD



VIOLENCIA FAMILIAR

AVENIDA F.C. MEXICANO



Horario de atención
09:00 - 11:59
MARTES

43%

HOSTIGAMIENTO Y ACOSO SEXUAL

AVENIDA F.C. MEXICANO



Horario de atención
12:00 - 14:59
MARTES

29%

LESIONES

AVENIDA F.C. MEXICANO



Horario de atención
06:00 - 08:59
MARTES

14%

VIOLENCIA DE GÉNERO

CALLE PASEO DE LOS CIPRECES



Horario de atención
09:00 - 11:59
MARTES

14%

Horario	D	L	Ma	Mi	J	V	S	Total
00:00 - 02:59	0.0%	0.0%	0.0%	0.0%	0.0%	14.3%	0.0%	14.3%
03:00 - 05:59	0.0%	0.0%	0.0%	0.0%	0.0%	0.0%	0.0%	0.0%
06:00 - 08:59	0.0%	0.0%	14.3%	0.0%	0.0%	0.0%	0.0%	14.3%
09:00 - 11:59	14.3%	0.0%	28.6%	0.0%	0.0%	0.0%	0.0%	42.9%
12:00 - 14:59	0.0%	0.0%	14.3%	0.0%	14.3%	0.0%	0.0%	28.6%
15:00 - 17:59	0.0%	0.0%	0.0%	0.0%	0.0%	0.0%	0.0%	0.0%
18:00 - 20:59	0.0%	0.0%	0.0%	0.0%	0.0%	0.0%	0.0%	0.0%
21:00 - 23:59	0.0%	0.0%	0.0%	0.0%	0.0%	0.0%	0.0%	0.0%
Total	14.3%	0.0%	57.1%	0.0%	14.3%	14.3%	0.0%	100.0%



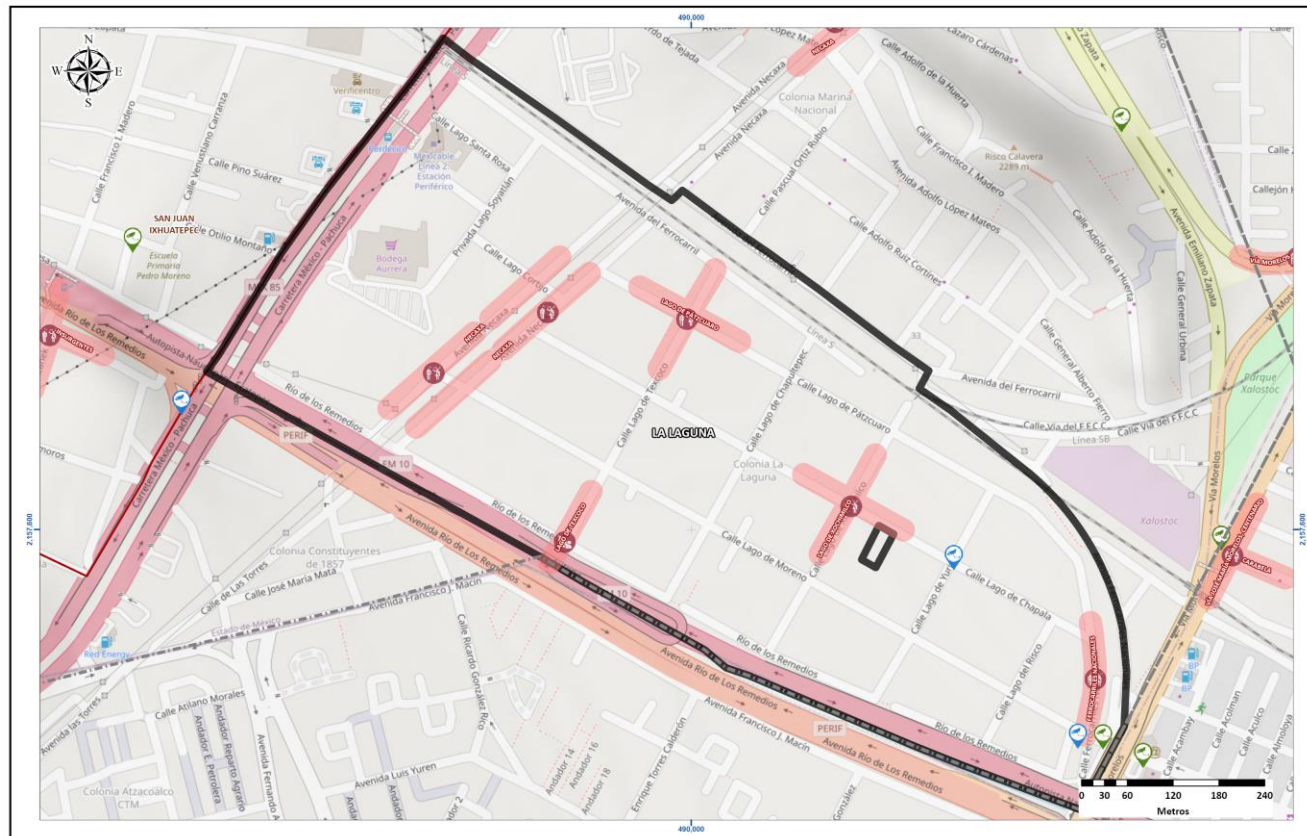
7

LA LAGUNA

CORREDORES PRIORITARIOS

SEGURIDAD

SECRETARÍA DE SEGURIDAD



VIOLENCIA FAMILIAR

AVENIDA NECAXA

83%

Horario de atención: **09:00 - 11:59**
MIÉRCOLES

VIOLENCIA CONTRA LA MUJER

CALLE LAGO DE TEXCOCO

17%

Horario de atención: **03:00 - 05:59**
DOMINGO

Horario	D	L	Ma	Mi	J	V	S	Total
00:00 - 02:59	16.7%	0.0%	0.0%	0.0%	0.0%	0.0%	0.0%	16.7%
03:00 - 05:59	16.7%	0.0%	0.0%	0.0%	0.0%	0.0%	0.0%	16.7%
06:00 - 08:59	0.0%	0.0%	0.0%	0.0%	0.0%	0.0%	0.0%	0.0%
09:00 - 11:59	0.0%	0.0%	0.0%	16.7%	0.0%	0.0%	0.0%	16.7%
12:00 - 14:59	0.0%	0.0%	0.0%	0.0%	0.0%	0.0%	0.0%	0.0%
15:00 - 17:59	0.0%	0.0%	0.0%	0.0%	0.0%	0.0%	0.0%	0.0%
18:00 - 20:59	0.0%	0.0%	0.0%	0.0%	0.0%	0.0%	0.0%	0.0%
21:00 - 23:59	16.7%	0.0%	0.0%	16.7%	0.0%	16.7%	0.0%	50.0%
Total	50.0%	0.0%	0.0%	33.3%	0.0%	16.7%	0.0%	100.0%

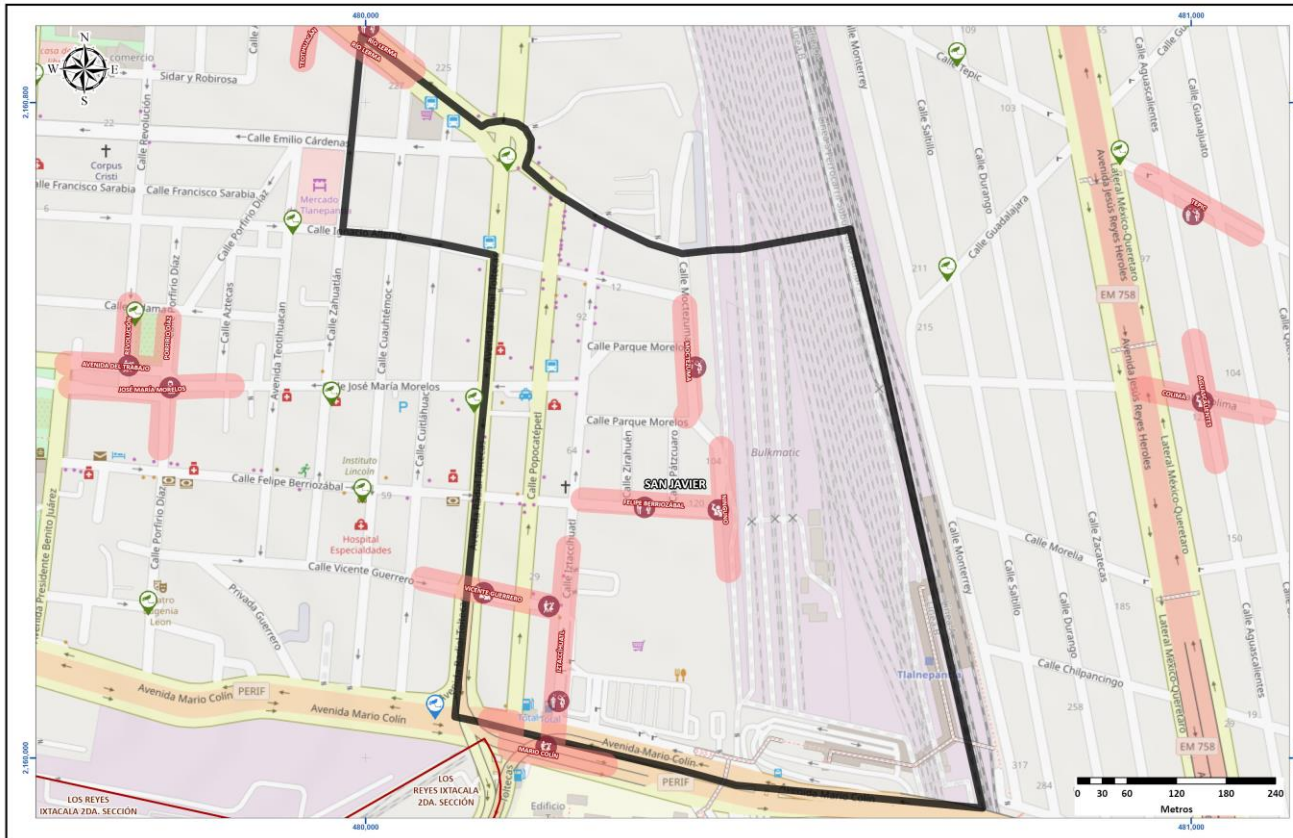


8

SAN JAVIER CORREDORES PRIORITARIOS

SEGURIDAD

SECRETARÍA DE SEGURIDAD



VIOLENCIA FAMILIAR

CALLE MOCTEZUMA



Horario de atención
**03:00 - 05:59
MARTES**

50%

VIOLENCIA CONTRA LA MUJER

CALLE VICENTE GUERRERO



Horario de atención
**09:00 - 11:59
DOMINGO**

33%

VIOLENCIA DE PAREJA

CALLE VICENTE GUERRERO



Horario de atención
**00:00 - 02:59
LUNES**

17%

Horario	D	L	Ma	Mi	J	V	S	Total
00:00 - 02:59	0.0%	16.7%	0.0%	0.0%	0.0%	16.7%	0.0%	33.3%
03:00 - 05:59	0.0%	0.0%	16.7%	0.0%	0.0%	0.0%	0.0%	16.7%
06:00 - 08:59	0.0%	0.0%	0.0%	0.0%	0.0%	0.0%	0.0%	0.0%
09:00 - 11:59	16.7%	0.0%	0.0%	0.0%	0.0%	0.0%	0.0%	16.7%
12:00 - 14:59	0.0%	0.0%	0.0%	0.0%	0.0%	0.0%	0.0%	0.0%
15:00 - 17:59	0.0%	0.0%	0.0%	0.0%	0.0%	0.0%	0.0%	0.0%
18:00 - 20:59	0.0%	16.7%	0.0%	0.0%	0.0%	0.0%	0.0%	16.7%
21:00 - 23:59	0.0%	0.0%	0.0%	0.0%	16.7%	0.0%	0.0%	16.7%
Total	16.7%	33.3%	16.7%	0.0%	16.7%	16.7%	0.0%	100.0%



9

SAN JUAN IXHUATEPEC

CORREDORES PRIORITARIOS

SEGURIDAD

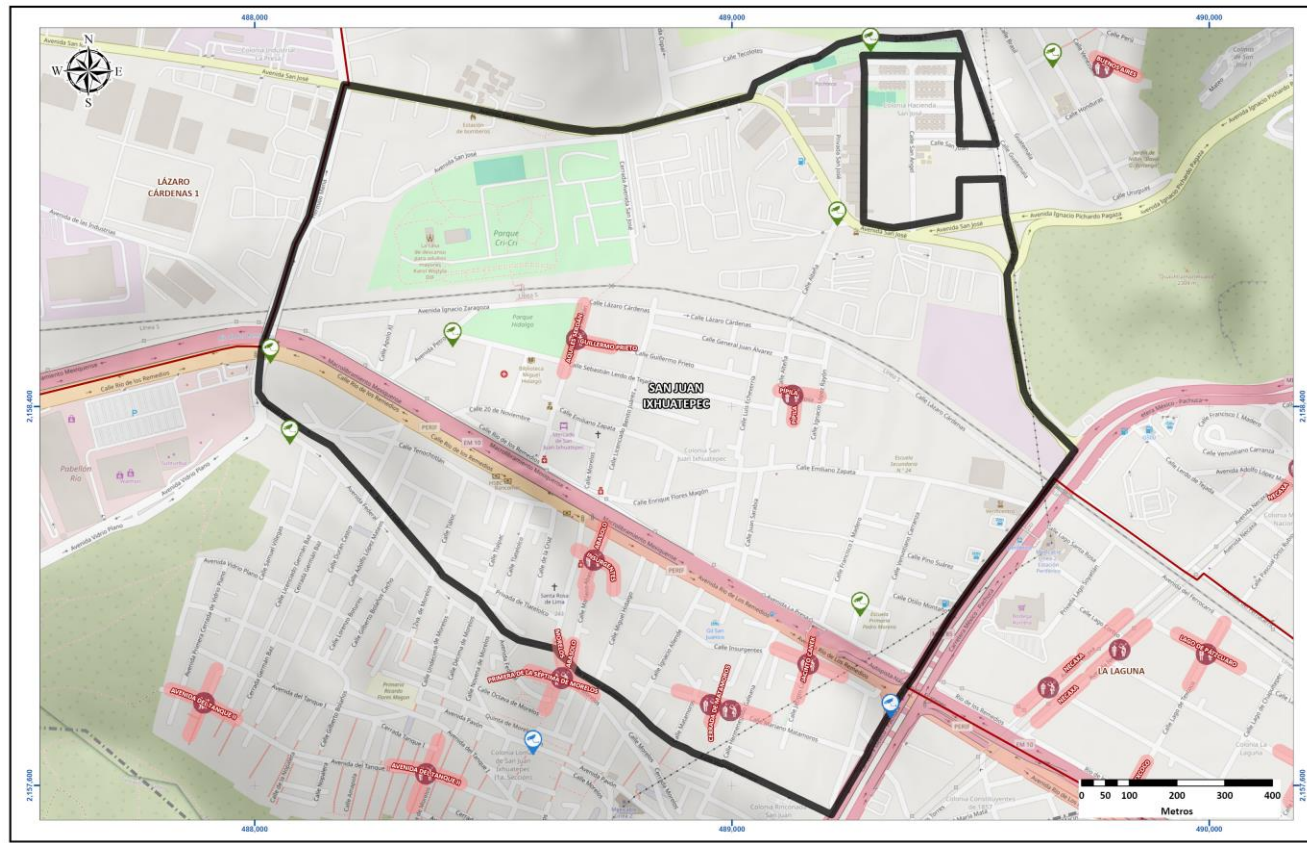
SECRETARÍA DE SEGURIDAD

VIOLENCIA FAMILIAR

CALLE MARIANO MATAMOROS

100%

Horario de atención
12:00 - 14:59
MIÉRCOLES



Horario	D	L	Ma	Mi	J	V	S	Total
00:00 - 02:59	16.7%	0.0%	0.0%	0.0%	0.0%	0.0%	0.0%	16.7%
03:00 - 05:59	0.0%	0.0%	0.0%	0.0%	0.0%	0.0%	0.0%	0.0%
06:00 - 08:59	0.0%	0.0%	0.0%	0.0%	0.0%	0.0%	0.0%	0.0%
09:00 - 11:59	0.0%	0.0%	0.0%	16.7%	0.0%	0.0%	0.0%	16.7%
12:00 - 14:59	0.0%	0.0%	16.7%	16.7%	0.0%	0.0%	0.0%	33.3%
15:00 - 17:59	0.0%	16.7%	0.0%	16.7%	0.0%	0.0%	0.0%	33.3%
18:00 - 20:59	0.0%	0.0%	0.0%	0.0%	0.0%	0.0%	0.0%	0.0%
21:00 - 23:59	0.0%	0.0%	0.0%	0.0%	0.0%	0.0%	0.0%	0.0%
Total	16.7%	16.7%	16.7%	50.0%	0.0%	0.0%	0.0%	100.0%



10

SANTA MARÍA TLAYACAMPA

CORREDORES PRIORITARIOS

SEGURIDAD

SECRETARÍA DE SEGURIDAD

VIOLENCIA FAMILIAR

CALLE INDEPENDENCIA



Horario de atención

09:00 - 11:59
LUNES

100%



Horario	D	L	Ma	Mi	J	V	S	Total
00:00 - 02:59	0.0%	0.0%	0.0%	0.0%	0.0%	0.0%	0.0%	0.0%
03:00 - 05:59	0.0%	0.0%	0.0%	0.0%	0.0%	0.0%	0.0%	0.0%
06:00 - 08:59	20.0%	0.0%	0.0%	0.0%	0.0%	0.0%	0.0%	20.0%
09:00 - 11:59	0.0%	20.0%	0.0%	0.0%	0.0%	0.0%	40.0%	60.0%
12:00 - 14:59	0.0%	0.0%	0.0%	0.0%	0.0%	0.0%	0.0%	0.0%
15:00 - 17:59	0.0%	0.0%	0.0%	0.0%	0.0%	0.0%	0.0%	0.0%
18:00 - 20:59	0.0%	0.0%	0.0%	0.0%	0.0%	0.0%	0.0%	0.0%
21:00 - 23:59	20.0%	0.0%	0.0%	0.0%	0.0%	0.0%	0.0%	20.0%
Total	40.0%	20.0%	0.0%	0.0%	0.0%	0.0%	40.0%	100.0%