

VALLE DE CHALCO SOLIDARIDAD

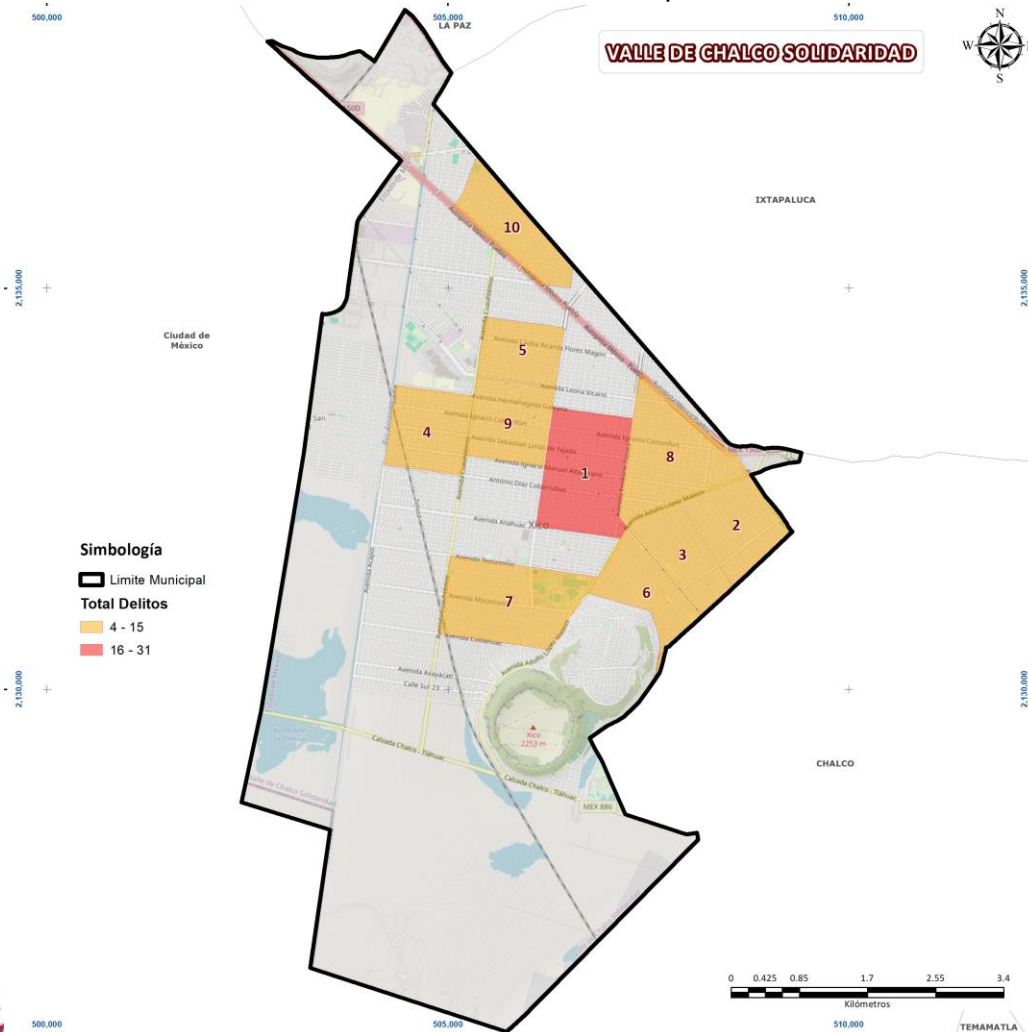
1 al 31 de agosto de 2024
VIOLENCIA DE GÉNERO
REPORTE EJECUTIVO



Fuente: Fiscalía General de Justicia - Delitos Vinculados a Violencia de Género (FGJ-VG),
Fiscalía General de Justicia - Delitos de Alto Impacto (FGJ-DAI), Sistema de Emergencia
9-1-1 (SE911) y Sistema de Denuncia Anónima 089 (SDA089)



- Cabe destacar, que derivado de este análisis para el mes de agosto en el municipio de Valle De Chalco Solidaridad, se identificaron diez colonias de atención prioritaria, las cuales concentran el 59% de la incidencia del municipio.



Colonias repetidas en el periodo

No.	Colonia	Inc.	%	% Acum.
1	SANTA CRUZ 2	21	14.19	14.19
2	PROVIDENCIA	10	6.76	20.95
3	GUADALUPANA I	9	6.08	27.03
4	MARÍA ISABEL	9	6.08	33.11
5	SANTIAGO	7	4.73	37.84
6	GUADALUPANA II SECCIÓN	7	4.73	42.57
7	SAN MIGUEL XICO II SECCIÓN	6	4.05	46.62
8	SAN ISIDRO	6	4.05	50.68
9	LA CONCEPCIÓN	6	4.05	54.73
10	DARÍO MARTÍNEZ 2DA. SECCIÓN	6	4.05	58.78

DELITOS	INCIDENCIA	% DE INCIDENCIA
VIOLENCIA CONTRA LA MUJER	85	57.43
VIOLENCIA FAMILIAR	35	23.65
LESIONES	15	10.14
VIOLENCIA DE PAREJA	10	6.76
HOSTIGAMIENTO Y ACOSO SEXUAL	2	1.35
SUSTRACCIÓN DE HIJO	1	0.68
TOTAL GENERAL	148	100.0%

Composición de los datos por fuente:

FGJ-VG:	FGJ-DAI:	SE911:	SDA089:
0.00%	0.00%	99.32%	0.68%



VALLE DE CHALCO SOLIDARIDAD

COLONIAS DE ATENCIÓN

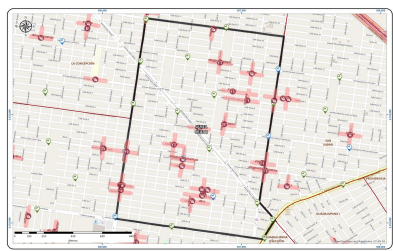
59%

SEGURIDAD

SECRETARÍA DE SEGURIDAD

1

SANTA CRUZ 2



**VIOLENCIA
CONTRA LA
MUJER**

00:00 - 02:59

57%



**VIOLENCIA
FAMILIAR**

15:00 - 17:59

29%



LESIONES

12:00 - 14:59

10%

2

PROVIDENCIA



**VIOLENCIA
CONTRA LA
MUJER**

21:00 - 23:59

70%



**VIOLENCIA
FAMILIAR**

12:00 - 14:59

30%

3

GUADALUPANA I



**VIOLENCIA
FAMILIAR**

18:00 - 20:59

56%



**VIOLENCIA
CONTRA LA
MUJER**

00:00 - 02:59

33%



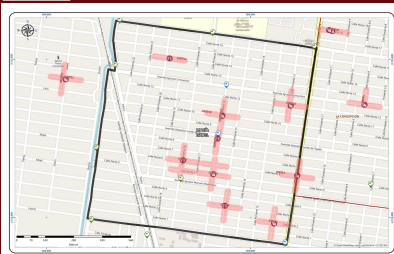
LESIONES

00:00 - 02:59

11%

4

MARÍA ISABEL



**VIOLENCIA
CONTRA LA
MUJER**

21:00 - 23:59

56%



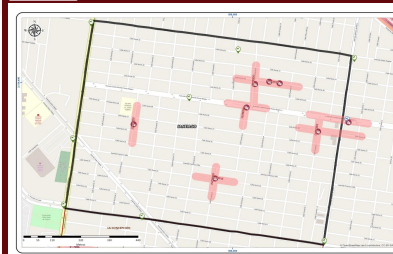
**VIOLENCIA
FAMILIAR**

21:00 - 23:59

44%

5

SANTIAGO



**VIOLENCIA
CONTRA LA
MUJER**

18:00 - 20:59

100%



VALLE DE CHALCO SOLIDARIDAD

COLONIAS DE ATENCIÓN

59%

SEGURIDAD

SECRETARÍA DE SEGURIDAD

6

GUADALUPANA II SECCIÓN



VIOLENCIA CONTRA LA MUJER

21:00 - 23:59

86%



HOSTIGAMIENTO Y ACOSO SEXUAL

09:00 - 11:59

14%

7

SAN MIGUEL XICO II SECCIÓN



VIOLENCIA DE PAREJA

21:00 - 23:59

67%



VIOLENCIA CONTRA LA MUJER

00:00 - 02:59
18:00 - 20:59

33%

8

SAN ISIDRO



VIOLENCIA CONTRA LA MUJER

15:00 - 17:59
21:00 - 23:59

67%



VIOLENCIA FAMILIAR

09:00 - 11:59

17%



LESIONES

21:00 - 23:59

17%

9

LA CONCEPCIÓN



VIOLENCIA CONTRA LA MUJER

03:00 - 05:59

83%



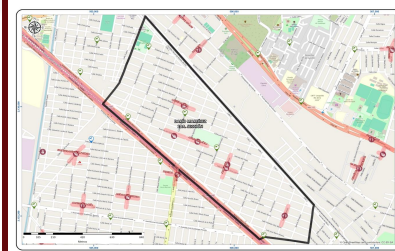
VIOLENCIA DE PAREJA

18:00 - 20:59

17%

10

DARÍO MARTÍNEZ 2DA. SECCIÓN



VIOLENCIA CONTRA LA MUJER

21:00 - 23:59

50%



LESIONES

15:00 - 17:59

17%



HOSTIGAMIENTO Y ACOSO SEXUAL

00:00 - 02:59

17%



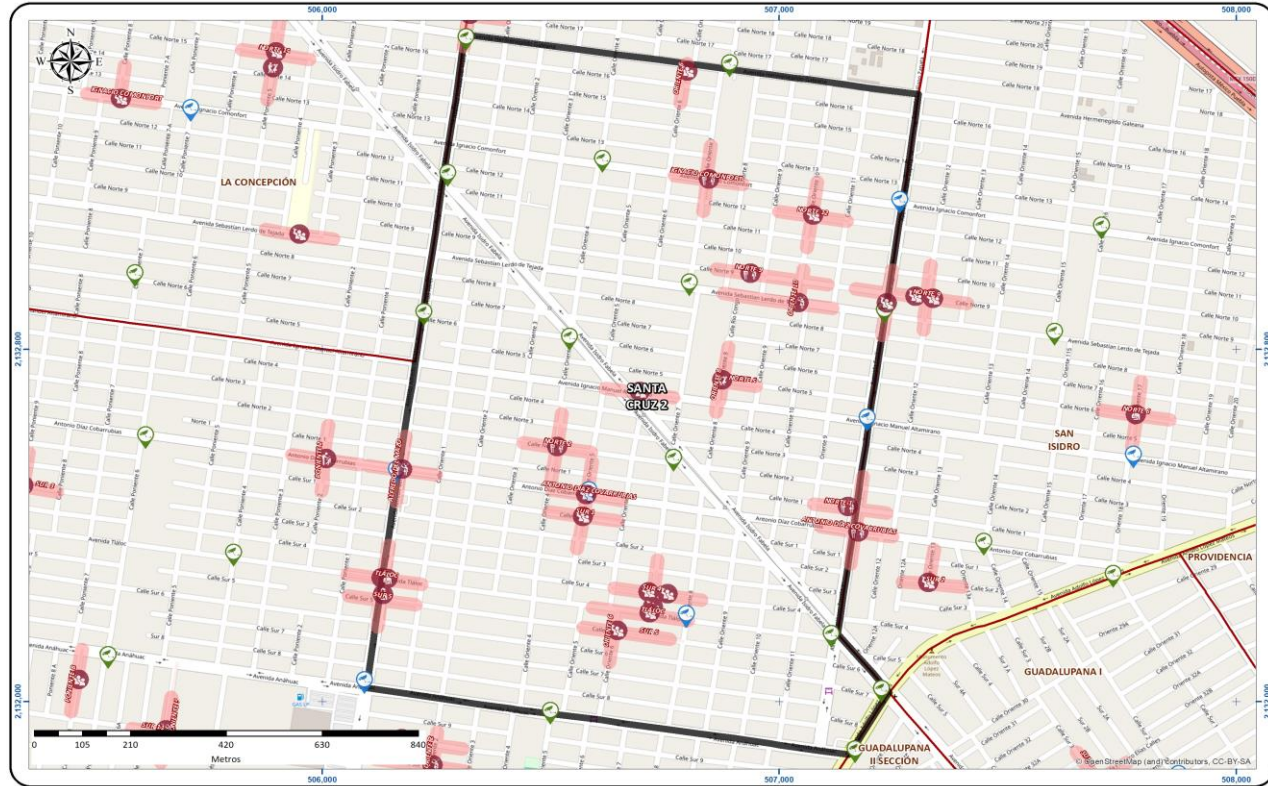
1

SANTA CRUZ 2

CORREDORES PRIORITARIOS

SEGURIDAD

SECRETARÍA DE SEGURIDAD



VIOLENCIA CONTRA LA MUJER

CALLE ORIENTE 5

Horario de atención: **21:00 - 23:59 SÁBADO**

57%

VIOLENCIA FAMILIAR

AVENIDA ANTONIO DÍAZ COVARRUBIAS

Horario de atención: **15:00 - 17:59 DOMINGO**

29%

LESIONES

AVENIDA TLÁLOC

Horario de atención: **12:00 - 14:59 MIÉRCOLES**

10%

VIOLENCIA DE PAREJA

CALLE ORIENTE 8

Horario de atención: **21:00 - 23:59 JUEVES**

5%

Horario	D	L	Ma	Mi	J	V	S	Total
00:00 - 02:59	9.5%	4.8%	0.0%	0.0%	0.0%	0.0%	4.8%	19.0%
03:00 - 05:59	4.8%	4.8%	0.0%	0.0%	0.0%	0.0%	4.8%	14.3%
06:00 - 08:59	0.0%	0.0%	0.0%	0.0%	0.0%	0.0%	0.0%	0.0%
09:00 - 11:59	0.0%	0.0%	4.8%	0.0%	0.0%	0.0%	0.0%	4.8%
12:00 - 14:59	4.8%	0.0%	0.0%	9.5%	0.0%	0.0%	0.0%	14.3%
15:00 - 17:59	14.3%	4.8%	4.8%	0.0%	0.0%	0.0%	0.0%	23.8%
18:00 - 20:59	0.0%	0.0%	0.0%	0.0%	0.0%	0.0%	0.0%	0.0%
21:00 - 23:59	0.0%	0.0%	0.0%	4.8%	9.5%	0.0%	9.5%	23.8%
Total	33.3%	14.3%	9.5%	14.3%	9.5%	0.0%	19.0%	100.0%



2

PROVIDENCIA

CORREDORES PRIORITARIOS

SEGURIDAD

SECRETARÍA DE SEGURIDAD



VIOLENCIA CONTRA LA MUJER

AVENIDA BENITO JUÁREZ

Horario de atención
09:00 - 11:59
LUNES



70%

VIOLENCIA FAMILIAR

CALLE ORIENTE 34

Horario de atención
12:00 - 14:59
DOMINGO



30%

Horario	D	L	Ma	Mi	J	V	S	Total
00:00 - 02:59	0.0%	0.0%	0.0%	0.0%	0.0%	0.0%	0.0%	0.0%
03:00 - 05:59	0.0%	0.0%	0.0%	0.0%	0.0%	0.0%	0.0%	0.0%
06:00 - 08:59	0.0%	0.0%	0.0%	0.0%	0.0%	0.0%	20.0%	20.0%
09:00 - 11:59	0.0%	10.0%	0.0%	0.0%	0.0%	0.0%	0.0%	10.0%
12:00 - 14:59	10.0%	0.0%	0.0%	0.0%	0.0%	0.0%	0.0%	10.0%
15:00 - 17:59	0.0%	0.0%	0.0%	0.0%	0.0%	0.0%	0.0%	0.0%
18:00 - 20:59	10.0%	0.0%	10.0%	10.0%	0.0%	0.0%	0.0%	30.0%
21:00 - 23:59	10.0%	0.0%	0.0%	0.0%	10.0%	0.0%	10.0%	30.0%
Total	30.0%	10.0%	10.0%	10.0%	10.0%	0.0%	30.0%	100.0%



3

GUADALUPANA I

CORREDORES PRIORITARIOS

SEGURIDAD

SECRETARÍA DE SEGURIDAD



VIOLENCIA FAMILIAR

CALLE ORIENTE 44

Horario de atención: 18:00 - 20:59 JUEVES



56%

VIOLENCIA CONTRA LA MUJER

CALLE ORIENTE 44-A

Horario de atención: 00:00 - 02:59 VIERNES



33%

LESIONES

CALLE ORIENTE 37

Horario de atención: 00:00 - 02:59 DOMINGO



11%

Horario	D	L	Ma	Mi	J	V	S	Total
00:00 - 02:59	11.1%	0.0%	0.0%	0.0%	0.0%	22.2%	0.0%	33.3%
03:00 - 05:59	0.0%	0.0%	0.0%	0.0%	0.0%	0.0%	0.0%	0.0%
06:00 - 08:59	0.0%	0.0%	0.0%	0.0%	0.0%	0.0%	0.0%	0.0%
09:00 - 11:59	0.0%	0.0%	0.0%	0.0%	0.0%	0.0%	0.0%	0.0%
12:00 - 14:59	0.0%	11.1%	0.0%	0.0%	0.0%	0.0%	0.0%	11.1%
15:00 - 17:59	11.1%	0.0%	0.0%	0.0%	0.0%	0.0%	0.0%	11.1%
18:00 - 20:59	11.1%	11.1%	0.0%	0.0%	11.1%	0.0%	0.0%	33.3%
21:00 - 23:59	11.1%	0.0%	0.0%	0.0%	0.0%	0.0%	0.0%	11.1%
Total	44.4%	22.2%	0.0%	0.0%	11.1%	22.2%	0.0%	100.0%



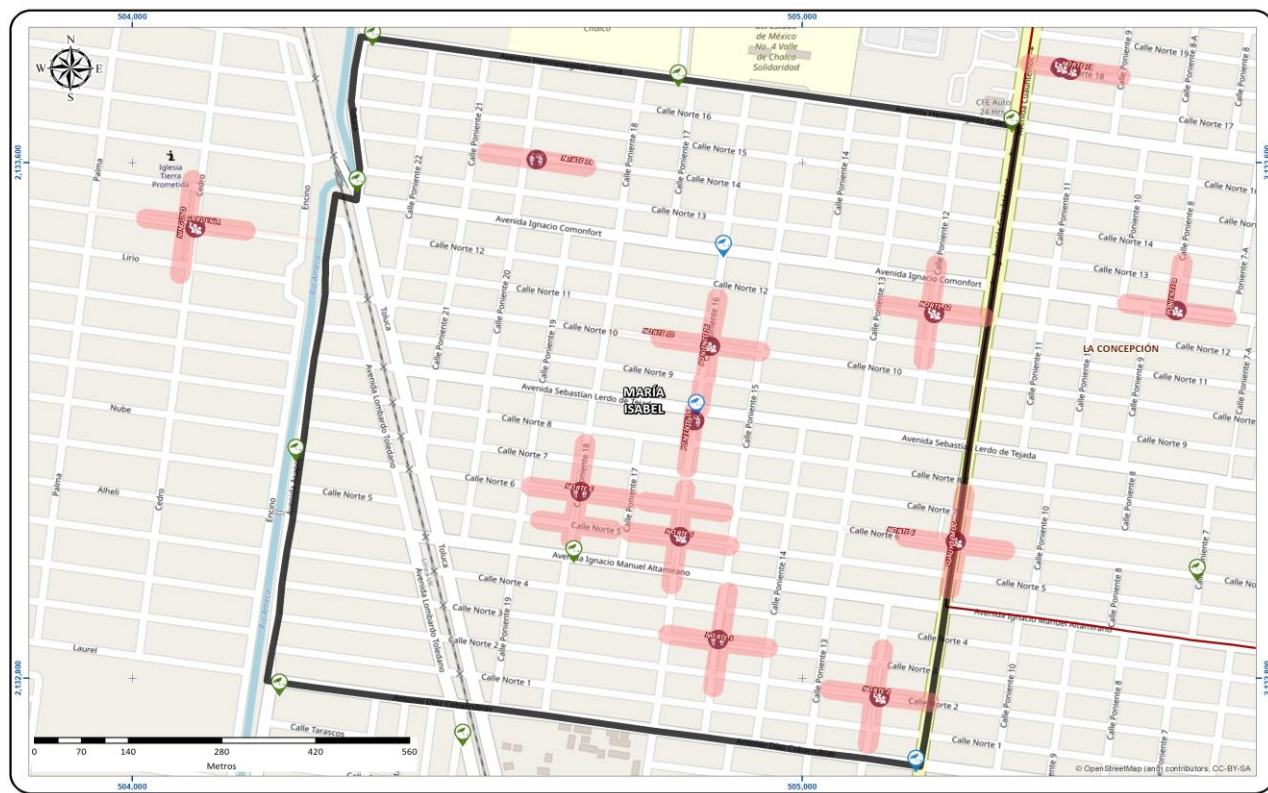
4

MARÍA ISABEL

CORREDORES PRIORITARIOS

SEGURIDAD

SECRETARÍA DE SEGURIDAD



VIOLENCIA CONTRA LA MUJER

CALLE NORTE 5

Horario de atención: **21:00 - 23:59 DOMINGO**

56%

VIOLENCIA FAMILIAR

CALLE PONIENTE 16

Horario de atención: **21:00 - 23:59 JUEVES**

44%

Horario	D	L	Ma	Mi	J	V	S	Total
00:00 - 02:59	0.0%	0.0%	0.0%	0.0%	0.0%	0.0%	0.0%	0.0%
03:00 - 05:59	0.0%	0.0%	0.0%	0.0%	0.0%	0.0%	0.0%	0.0%
06:00 - 08:59	0.0%	0.0%	0.0%	0.0%	0.0%	0.0%	0.0%	0.0%
09:00 - 11:59	0.0%	0.0%	0.0%	0.0%	11.1%	0.0%	0.0%	11.1%
12:00 - 14:59	0.0%	0.0%	0.0%	0.0%	0.0%	0.0%	0.0%	0.0%
15:00 - 17:59	0.0%	0.0%	0.0%	0.0%	0.0%	0.0%	0.0%	0.0%
18:00 - 20:59	11.1%	11.1%	0.0%	0.0%	0.0%	0.0%	11.1%	33.3%
21:00 - 23:59	22.2%	0.0%	11.1%	0.0%	11.1%	0.0%	11.1%	55.6%
Total	33.3%	11.1%	11.1%	0.0%	22.2%	0.0%	22.2%	100.0%



5

SANTIAGO

CORREDORES PRIORITARIOS

SEGURIDAD

SECRETARÍA DE SEGURIDAD

VIOLENCIA CONTRA LA MUJER

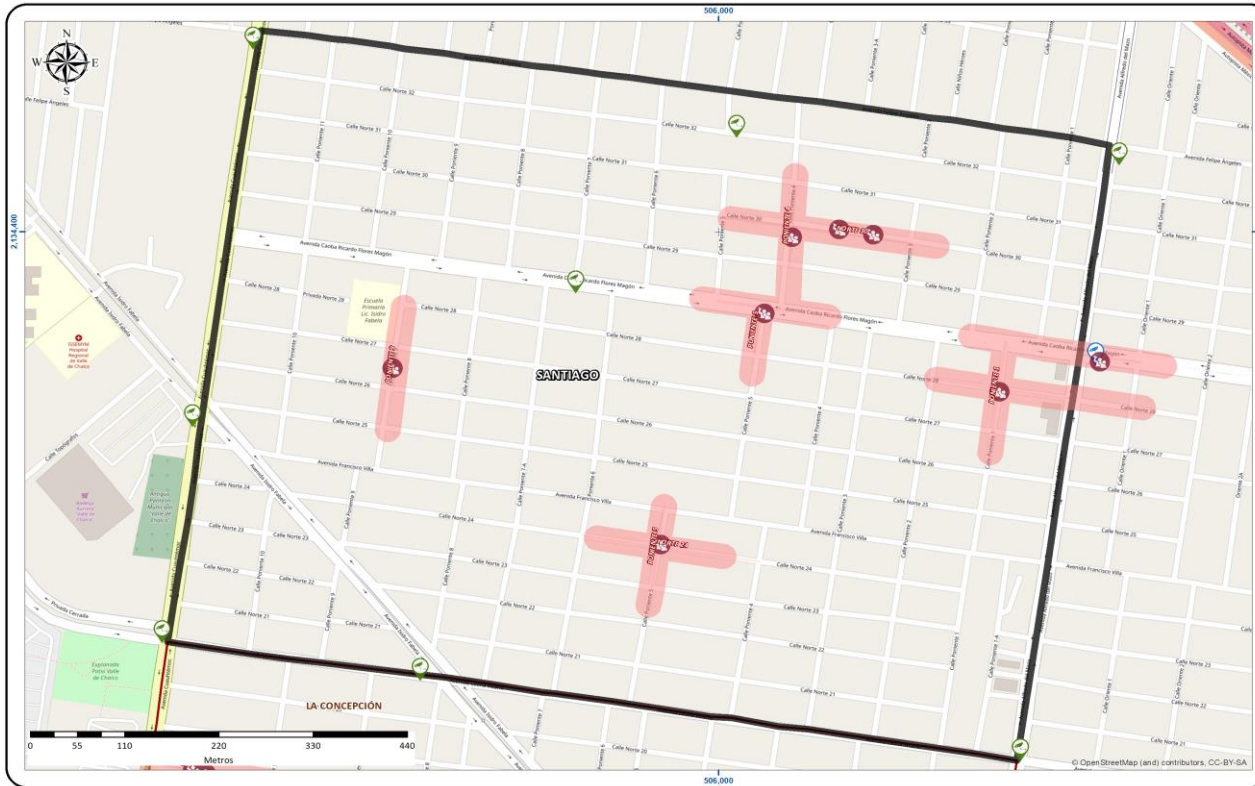
CALLE NORTE 30



Horario de atención

18:00 - 20:59
SÁBADO

100%



Horario	D	L	Ma	Mi	J	V	S	Total
00:00 - 02:59	0.0%	0.0%	0.0%	0.0%	0.0%	0.0%	0.0%	0.0%
03:00 - 05:59	0.0%	0.0%	0.0%	0.0%	0.0%	0.0%	0.0%	0.0%
06:00 - 08:59	0.0%	0.0%	0.0%	0.0%	0.0%	0.0%	0.0%	0.0%
09:00 - 11:59	0.0%	0.0%	0.0%	0.0%	0.0%	0.0%	0.0%	0.0%
12:00 - 14:59	0.0%	0.0%	0.0%	0.0%	0.0%	0.0%	0.0%	0.0%
15:00 - 17:59	14.3%	0.0%	0.0%	0.0%	0.0%	14.3%	14.3%	42.9%
18:00 - 20:59	0.0%	0.0%	0.0%	0.0%	0.0%	0.0%	42.9%	42.9%
21:00 - 23:59	0.0%	14.3%	0.0%	0.0%	0.0%	0.0%	0.0%	14.3%
Total	14.3%	14.3%	0.0%	0.0%	0.0%	14.3%	57.1%	100.0%



6

GUADALUPANA II SECCIÓN

CORREDORES PRIORITARIOS

SEGURIDAD

SECRETARÍA DE SEGURIDAD



VIOLENCIA CONTRA LA MUJER

CALLE ORIENTE 44

Horario de atención: 18:00 - 20:59 LUNES



86%

HOSTIGAMIENTO Y ACOSO SEXUAL

CALLE ORIENTE 44

Horario de atención: 09:00 - 11:59 SÁBADO



14%

Horario	D	L	Ma	Mi	J	V	S	Total
00:00 - 02:59	0.0%	0.0%	0.0%	0.0%	0.0%	0.0%	14.3%	14.3%
03:00 - 05:59	0.0%	0.0%	0.0%	0.0%	0.0%	0.0%	0.0%	0.0%
06:00 - 08:59	0.0%	0.0%	0.0%	0.0%	0.0%	0.0%	0.0%	0.0%
09:00 - 11:59	0.0%	0.0%	0.0%	0.0%	0.0%	0.0%	14.3%	14.3%
12:00 - 14:59	0.0%	0.0%	0.0%	0.0%	0.0%	0.0%	0.0%	0.0%
15:00 - 17:59	0.0%	0.0%	0.0%	0.0%	0.0%	0.0%	0.0%	0.0%
18:00 - 20:59	0.0%	28.6%	0.0%	0.0%	0.0%	0.0%	0.0%	28.6%
21:00 - 23:59	0.0%	14.3%	14.3%	0.0%	0.0%	14.3%	0.0%	42.9%
Total	0.0%	42.9%	14.3%	0.0%	0.0%	14.3%	28.6%	100.0%



7

SAN MIGUEL XICO II SECCIÓN

CORREDORES PRIORITARIOS

SEGURIDAD

SECRETARÍA DE SEGURIDAD



VIOLENCIA DE PAREJA

CALLE SUR 17

67%

Horario de atención: 00:00 - 02:59 LUNES

VIOLENCIA CONTRA LA MUJER

CALLE PONIENTE 10

33%

Horario de atención: 00:00 - 02:59 MARTES

Horario	D	L	Ma	Mi	J	V	S	Total
00:00 - 02:59	0.0%	16.7%	16.7%	0.0%	0.0%	0.0%	0.0%	33.3%
03:00 - 05:59	0.0%	0.0%	0.0%	0.0%	0.0%	0.0%	0.0%	0.0%
06:00 - 08:59	0.0%	0.0%	0.0%	0.0%	0.0%	0.0%	0.0%	0.0%
09:00 - 11:59	0.0%	0.0%	0.0%	0.0%	0.0%	0.0%	0.0%	0.0%
12:00 - 14:59	0.0%	0.0%	0.0%	0.0%	0.0%	16.7%	0.0%	16.7%
15:00 - 17:59	0.0%	0.0%	0.0%	0.0%	0.0%	0.0%	0.0%	0.0%
18:00 - 20:59	0.0%	0.0%	0.0%	0.0%	0.0%	0.0%	16.7%	16.7%
21:00 - 23:59	33.3%	0.0%	0.0%	0.0%	0.0%	0.0%	0.0%	33.3%
Total	33.3%	16.7%	16.7%	0.0%	0.0%	16.7%	16.7%	100.0%



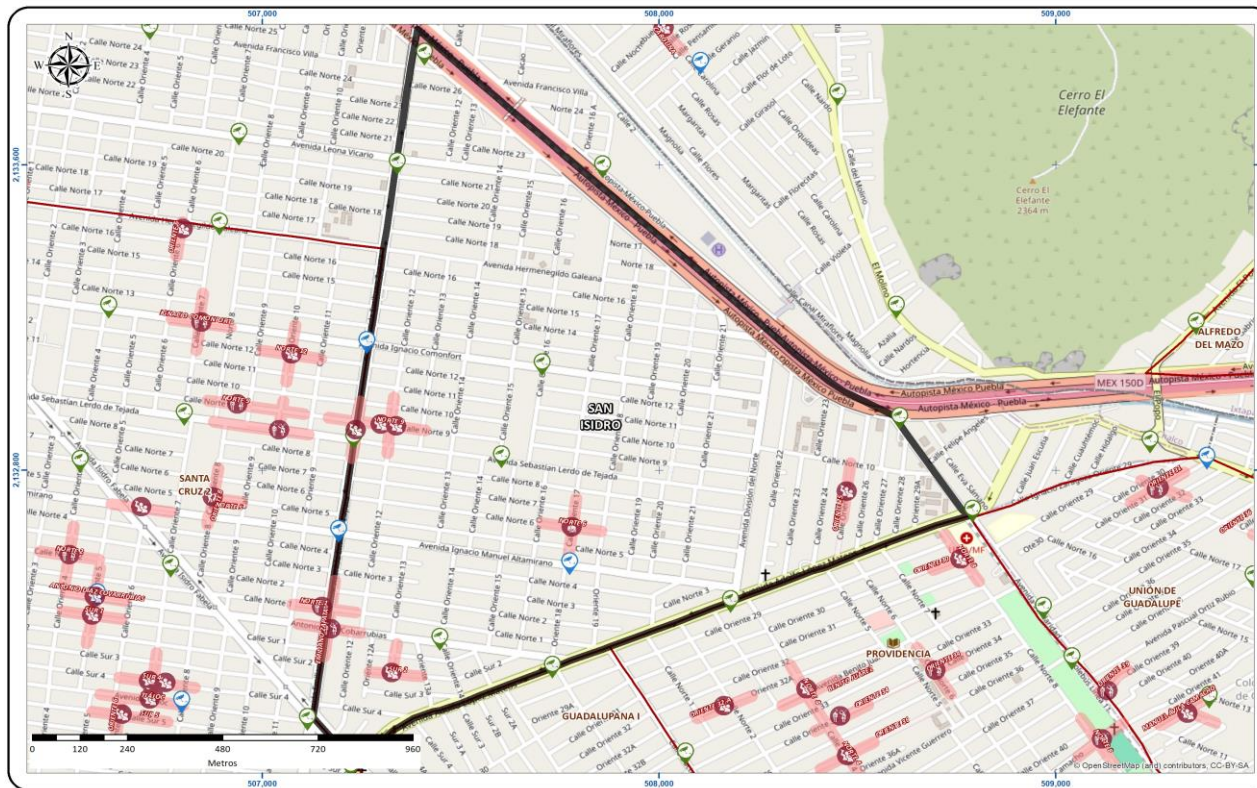
8

SAN ISIDRO

CORREDORES PRIORITARIOS

SEGURIDAD

SECRETARÍA DE SEGURIDAD



VIOLENCIA CONTRA LA MUJER

CALLE NORTE 9

Horario de atención

15:00 - 17:59
DOMINGO



67%

VIOLENCIA FAMILIAR

AVENIDA ANTONIO DÍAZ
COVARRUBIAS

Horario de atención

09:00 - 11:59
DOMINGO



17%

LESIONES

CALLE ORIENTE 17

Horario de atención

21:00 - 23:59
VIERNES



17%

Horario	D	L	Ma	Mi	J	V	S	Total
00:00 - 02:59	0.0%	0.0%	0.0%	0.0%	0.0%	0.0%	0.0%	0.0%
03:00 - 05:59	0.0%	0.0%	0.0%	0.0%	0.0%	0.0%	0.0%	0.0%
06:00 - 08:59	0.0%	0.0%	0.0%	0.0%	0.0%	0.0%	0.0%	0.0%
09:00 - 11:59	16.7%	0.0%	0.0%	0.0%	0.0%	0.0%	0.0%	16.7%
12:00 - 14:59	0.0%	0.0%	0.0%	0.0%	0.0%	0.0%	0.0%	0.0%
15:00 - 17:59	50.0%	0.0%	0.0%	0.0%	0.0%	0.0%	0.0%	50.0%
18:00 - 20:59	0.0%	0.0%	0.0%	0.0%	0.0%	0.0%	0.0%	0.0%
21:00 - 23:59	0.0%	0.0%	0.0%	0.0%	0.0%	33.3%	0.0%	33.3%
Total	66.7%	0.0%	0.0%	0.0%	0.0%	33.3%	0.0%	100.0%



9

LA CONCEPCIÓN

CORREDORES PRIORITARIOS

SEGURIDAD

SECRETARÍA DE SEGURIDAD



VIOLENCIA CONTRA LA MUJER

CALLE NORTE 18

Horario de atención: 15:00 - 17:59 JUEVES



83%

VIOLENCIA DE PAREJA

CALLE PONIENTE 5

Horario de atención: 18:00 - 20:59 VIERNES



17%

Horario	D	L	Ma	Mi	J	V	S	Total
00:00 - 02:59	16.7%	0.0%	0.0%	0.0%	0.0%	0.0%	0.0%	16.7%
03:00 - 05:59	0.0%	0.0%	16.7%	0.0%	0.0%	0.0%	16.7%	33.3%
06:00 - 08:59	0.0%	0.0%	16.7%	0.0%	0.0%	0.0%	0.0%	16.7%
09:00 - 11:59	0.0%	0.0%	0.0%	0.0%	0.0%	0.0%	0.0%	0.0%
12:00 - 14:59	0.0%	0.0%	0.0%	0.0%	0.0%	0.0%	0.0%	0.0%
15:00 - 17:59	0.0%	0.0%	0.0%	0.0%	16.7%	0.0%	0.0%	16.7%
18:00 - 20:59	0.0%	0.0%	0.0%	0.0%	0.0%	16.7%	0.0%	16.7%
21:00 - 23:59	0.0%	0.0%	0.0%	0.0%	0.0%	0.0%	0.0%	0.0%
Total	16.7%	0.0%	33.3%	0.0%	16.7%	16.7%	16.7%	100.0%



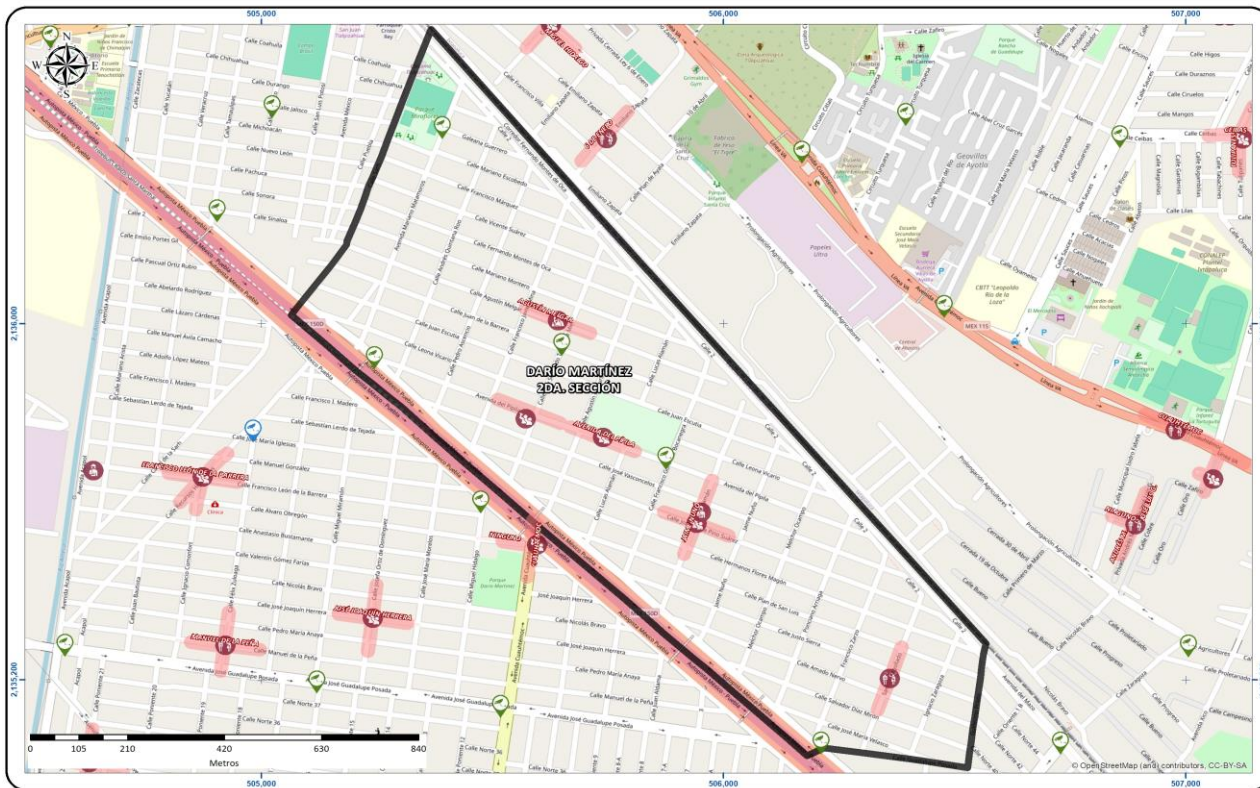
10

DARÍO MARTÍNEZ 2DA. SECCIÓN

CORREDORES PRIORITARIOS

SEGURIDAD

SECRETARÍA DE SEGURIDAD



VIOLENCIA CONTRA LA MUJER

CALLE JOSÉ MARÍA PINO SUÁREZ



Horario de atención: 00:00 - 02:59 SÁBADO

50%

LESIONES

CALLE JAIME NUNÚ



Horario de atención: 15:00 - 17:59 JUEVES

17%

HOSTIGAMIENTO Y ACOSO SEXUAL

CALLE AGUSTÍN MELGAR



Horario de atención: 00:00 - 02:59 DOMINGO

17%

VIOLENCIA FAMILIAR

CALLE IGNACIO ZARAGOZA



Horario de atención: 03:00 - 05:59 MIÉRCOLES

17%

Horario	D	L	Ma	Mi	J	V	S	Total
00:00 - 02:59	16.7%	0.0%	0.0%	0.0%	0.0%	0.0%	16.7%	33.3%
03:00 - 05:59	0.0%	0.0%	0.0%	16.7%	0.0%	0.0%	0.0%	16.7%
06:00 - 08:59	0.0%	0.0%	0.0%	0.0%	0.0%	0.0%	0.0%	0.0%
09:00 - 11:59	0.0%	0.0%	0.0%	0.0%	0.0%	0.0%	0.0%	0.0%
12:00 - 14:59	0.0%	0.0%	0.0%	0.0%	0.0%	0.0%	0.0%	0.0%
15:00 - 17:59	0.0%	0.0%	0.0%	0.0%	16.7%	0.0%	0.0%	16.7%
18:00 - 20:59	0.0%	0.0%	16.7%	0.0%	0.0%	0.0%	0.0%	16.7%
21:00 - 23:59	0.0%	0.0%	0.0%	0.0%	16.7%	0.0%	0.0%	16.7%
Total	16.7%	0.0%	16.7%	16.7%	33.3%	0.0%	16.7%	100.0%